

D65EX/EXI/PX/PXI/WX-18



ENGINE

Model.....	Komatsu SAA6D114E-6*
Type.....	4-cycle, water-cooled, direct injection
Aspiration.....	Variable geometry turbocharged, air-to-air aftercooled
Number of cylinders.....	6
Bore x stroke.....	114 mm x 144.5 mm 4.49" x 5.69"
Piston displacement.....	8.85 ltr 540 in³
Governor.....	All-speed and mid-range, electronic
Horsepower	
SAE J1995.....	Gross 164 kW 220 HP
ISO 9249 / SAE J1349.....	Net 162 kW 217 HP
Rated rpm.....	1950 rpm
Fan drive type.....	Variable speed hydraulic
Lubrication system	
Method.....	Gear pump, force lubrication
Filter.....	Full-flow

Type..... 4-cycle, water-cooled, direct injection

Aspiration.....Variable geometry
turbocharged, air-to-air aftercooled

Number of cylinders..... 6

Number of cylinders..... 6

Bore x stroke..... 114 mm x 144.5 mm **4.49" x 5.69"**

Piston displacement..... 8.85 ltr **540 in³**

Governor.....All-speed and mid-range, electronic

Horsepower

SAF J1995.....Gross 164 kW **220 HP**ISO 9249 / SAE J1349 Net 162 kW **217 HP**

Rated rpm 1950 rpm

Fan drive type Variable speed hydraulic

Lubrication system

Method Gear pump, force lubrication

Filter	Full flow
1	1
2	2
3	3
4	4
5	5
6	6
7	7
8	8
9	9
10	10
11	11
12	12
13	13
14	14
15	15
16	16
17	17
18	18
19	19
20	20
21	21
22	22
23	23
24	24
25	25
26	26
27	27
28	28
29	29
30	30
31	31
32	32
33	33
34	34
35	35
36	36
37	37
38	38
39	39
40	40
41	41
42	42
43	43
44	44
45	45
46	46
47	47
48	48
49	49
50	50
51	51
52	52
53	53
54	54
55	55
56	56
57	57
58	58
59	59
60	60
61	61
62	62
63	63
64	64
65	65
66	66
67	67
68	68
69	69
70	70
71	71
72	72
73	73
74	74
75	75
76	76
77	77
78	78
79	79
80	80
81	81
82	82
83	83
84	84
85	85
86	86
87	87
88	88
89	89
90	90
91	91
92	92
93	93
94	94
95	95
96	96
97	97
98	98
99	99
100	100

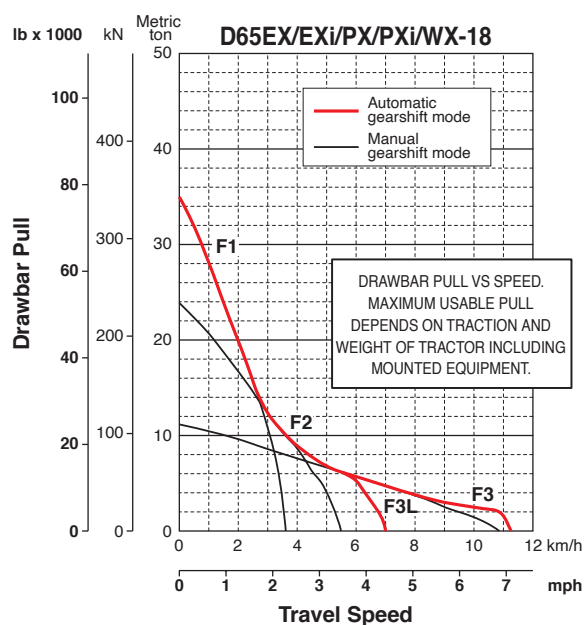
**EPA Tier 4 Final emissions certified



TORQFLOW TRANSMISSION

Komatsu TORQFLOW transmission consists of a water-cooled, 3-element, 1-stage, 2-phase, torque converter with lockup clutch, and a planetary gear, multiple-disc clutch transmission, which is electronically controlled, hydraulically actuated and force-lubricated for optimum heat dissipation. Shift lock lever and neutral safety switch.

Travel speed	Forward	Reverse
1st	3.7 km/h 2.3 mph	4.5 km/h 2.8 mph
2nd	5.6 km/h 3.5 mph	6.7 km/h 4.2 mph
3rd L	7.3 km/h 4.5 mph	8.7 km/h 5.4 mph
3rd	11.3 km/h 7.0 mph	13.6 km/h 8.5 mph



STEERING SYSTEM

Palm Command Control System (PCCS) lever controls for all directional movements. Pushing the PCCS lever forward results in forward machine travel, while pulling it rearward reverses the machine. Simply tilt the PCCS lever to the left for a left turns, tilt it right for right turns.

Hydrostatic Steering System (HSS) power has been increased 25% by a larger HSS motor, greater hydraulic pump flow, and more engine power while steering. The result is more powerful turns and quicker counter-rotation. Wet, multiple-disc, pedal-controlled service brakes are spring-actuated and hydraulically released. Gear shift lock lever also applies parking brake.

Minimum turning radius

D65EX-18..... 1.9 m **6'3"**

D65EXi-18.....	1.9 m	6'3"
----------------	-------	-------------

D65PX-18.....2.2 m **7'3"**

D65PXi-18.....	2.2 m	7'3"
----------------	-------	-------------

D65WX-18.....	2.1 m 6'11"
---------------	--------------------



UNDERCARRIAGE

Suspension	Oscillating equalizer bar and pivot shaft
Track roller frame	Monocoque, large section, durable construction

Rollers and idlers	Lubricated
Track shoes	

Parallel Link Undercarriage System (PLUS) with lubricated rotating bushings for extended system wear life and lower maintenance costs. Track tension is easily adjusted with a grease gun.

Track shoes

Parallel Link Undercarriage System (PLUS) with lubricated rotating bushings for extended system wear life and lower maintenance costs. Track tension is easily adjusted with a grease gun.

Tractor for outside mounted blade (Straight Tilt, Semi-U, SIGMADOZER®)*

		D65EX/EXi-18	D65PX/PXi-18	D65WX-18
Number of track rollers (each side)		7	8	7
Type of shoes (standard)		MS PLUS	MS PLUS	MS PLUS
Number of shoes (each side)		42	45	42
Grouser height	mm in	65 2.6"	65 2.6"	65 2.6"
Shoe width (standard)	mm in	610 24"	915 36"	760 30"
Ground contact area (ISO 16754)	cm ² in²	40910 6,341	66946 10,377	50969 7,900
Ground pressure (tractor) (ISO 16754)	kPa kgf/cm ² psi	44.1 0.45 6.4	29.6 0.3 4.29	38.4 0.39 5.57
Track gauge	mm ft.in	1880 6'2"	2050 6'9"	2050 6'9"
Length of track on ground	mm ft.in	2970 9'9"	3275 10'9"	2970 9'9"

Tractor with inside mounted PAT blade (requires Waste Package)*

		D65PX-18
Number of track rollers (each side)		8
Type of shoes (standard)		ES PLUS clipped
Number of shoes (each side)		45
Grouser height	mm in	65 2.6"
Shoe width (standard)	mm in	760 30"
Ground contact area (ISO 16754)	cm ² in²	55605 8,619
Ground pressure (tractor)	kPa	38
(ISO 16754)	kgf/cm ² psi	0.39 5.51
Track gauge	mm ft.in	2230 7'4"
Length of track on ground	mm ft.in	3275 10'9"

*See page 17 for tractor/blade combinations.

MS: Moderate Service shoe, ES: Extreme Service shoe, Clipped: Clipped grouser



FINAL DRIVES

Double-reduction planetary gear final drives increase drawbar pull and reduce stresses for longer life. Segmented sprocket teeth are bolt-on for easy replacement. Triple labyrinth housing protects the final drive seals.



HYDRAULIC SYSTEM

Closed-center load sensing system (CLSS) designed for precise and responsive control, and for efficient simultaneous operation.

Hydraulic control units:

All spool valves externally mounted beside the hydraulic tank.
Piston type hydraulic pump with capacity (discharge flow) of 248 ltr/min **65.5 U.S. gal/min** at rated engine rpm.

Relief valve setting 27.9 MPa 285 kg/cm² **4,050 psi**

Control valves:

Spool control valves for SIGMADOZER®, Semi-U, or straight tilt dozer

Positions: Blade lift Raise, hold, lower, and float
Blade tilt Right, hold, and left
Rear attachment..... Raise, hold, and lower



SERVICE REFILL CAPACITIES

Fuel tank	415 ltr	109.6 U.S. gal
DEF tank	23.5 ltr	6.2 U.S. gal
Coolant	49 ltr	12.9 U.S. gal
Engine.....	30.5 ltr	8.1 U.S. gal
Torque converter, transmission, bevel gear, and steering system	48 ltr	12.7 U.S. gal
Final drive (each side).....	27 ltr	7.1 U.S. gal

Spool control valves for Power Angle Tilt dozer

Positions: Blade lift Raise, hold, lower, and float
Blade tilt Right, hold, and left
Blade angle Right, hold, and left
Rear attachment..... Raise, hold, and lower

Hydraulic cylinders..... Double-acting, piston

	Number of cylinders	Bore
		SIGMADOZER® Straight Tilt Dozer
Blade lift	2	85 mm 3.3"
Blade tilt	1	125 mm 4.9"
Blade angle	2	N/A
Ripper lift	1	125 mm 4.9"
Pitch angle	1	39° - 53°



DOZER EQUIPMENT

Blade capacities per SAE J1265. Moldboard constructed from high tensile abrasion resistant steel.

	Overall Length With Dozer mm ft.in	Blade Capacity m ³ yd ³	Blade Width x Height mm ft.in	Max. Lift Above Ground mm ft.in	Max. Drop Below Ground mm ft.in	Max. Tilt Adjustment mm ft.in	Weight Dozer Equipment kg lb	Ground Pressure** ISO 16754 kPa kg/cm ² psi
D65EX-18	5490	5.61	3410 x 1425	1135	500	870	2390	50.0/0.51/ 7.25
SIGMADOZER®	18'0"	7.34	11'2" x 4'8"	3'9"	1'8"	2'10"	5,260	
D65EX-18	5330	5.61	3470 x 1425	1105	430	870	2375	50.0/0.51/ 7.25
Semi-U Dozer	17'6"	7.34	11'5" x 4'8"	3'8"	1'5"	2'10"	5,236	
D65EXi-18	5490	5.61	3410 x 1425	1135	500	870	2390	50.0/0.51/ 7.25
SIGMADOZER®	18'0"	7.34	11'2" x 4'8"	3'9"	1'8"	2'10"	5,260	
D65EXi-18	5330	5.61	3470 x 1425	1105	430	870	2375	50.0/0.51/ 7.25
Semi-U Dozer	17'6"	7.34	11'5" x 4'8"	3'8"	1'5"	2'10"	5,236	
D65PX-18	5680	3.69	3970 x 1100	1130	535	890	2100	32.8/0.33/ 4.76
Straight Tilt Dozer	18'8"	4.83	13'0" x 3'7"	3'8"	1'9"	2'11"	4,630	
D65PX-18*	5790	4.42	4010 x 1235	1170	695	520	2990	40.8/0.42/ 5.91
Power Angle Tilt Dozer	19'0"	5.78	13'2" x 4'1"	3'10"	2'3"	1'8"	6,590	
D65PXi-18	5680	3.69	3970 x 1100	1130	535	890	2100	32.8/0.33/ 4.76
Straight Tilt Dozer	18'8"	4.83	13'0" x 3'7"	3'8"	1'9"	2'11"	4,630	
D65WX-18	5500	5.90	3580 x 1425	1135	500	770	2500	43.3/0.44/ 6.28
SIGMADOZER®	18'1"	7.72	11'9" x 4'8"	3'9"	1'8"	2'6"	5,510	

* PX PAT blade machine available only when ordered with waste package

**Ground pressure shows tractor, ROPS cab, full fluids, operator, standard equipment and applicable blade.

Ground pressure per ISO 16754

SPECIFICATIONS

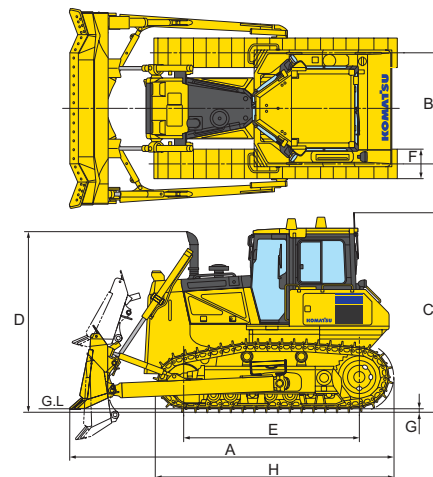
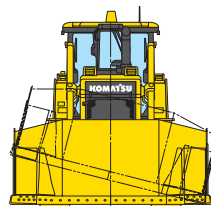


DIMENSIONS — OUTSIDE MOUNTED DOZER BLADE

	D65EX-18 SIGMADOZER®	D65EXi-18 SIGMADOZER®	D65PX-18 Straight Tilt Dozer	D65PXi-18 Straight Tilt Dozer	D65WX-18 SIGMADOZER®
A	5490 mm 18'0"	5490 mm 18'0"	5680 mm 18'8"	5680 mm 18'8"	5500 mm 18'1"
B	1880 mm 6'2"	1880 mm 6'2"	2050 mm 6'9"	2050 mm 6'9"	2050 mm 6'9"
C	3160 mm 10'5" *	3330 mm 10'11"	3160 mm 10'5" *	3330 mm 10'11"	3160 mm 10'5" *
D	3085 mm 10'1"	3085 mm 10'1"	3085 mm 10'1"	3085 mm 10'1"	3085 mm 10'1"
E	2970 mm 9'9"	2970 mm 9'9"	3275 mm 10'9"	3275 mm 10'9"	2970 mm 9'9"
F	610 mm 24"	610 mm 24"	915 mm 36"	915 mm 36"	760 mm 30"
G	65 mm 2.6"	65 mm 2.6"	65 mm 2.6"	65 mm 2.6"	65 mm 2.6"
H	4065 mm 13'4"	4065 mm 13'4"	4370 mm 14'4"	4370 mm 14'4"	4065 mm 13'4"

*3350 mm **11'0"** is overall height if Komatsu sweeps are installed.

Ground clearance 415 mm **16"**



Shown with D65EXi-18 SIGMADOZER® single grouser shoe.

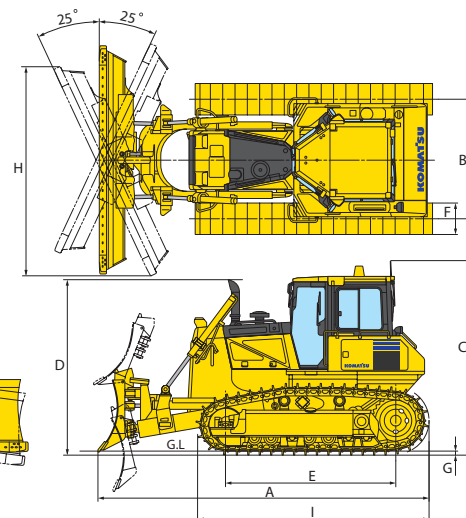
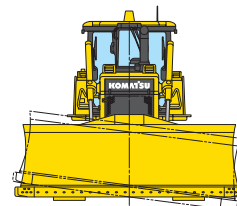


DIMENSIONS — PAT DOZER BLADE (requires Waste Package)

	D65PX-18 PAT Dozer
A	5790 mm 19'0"
B	2230 mm 7'4"
C	3160 mm 10'5" *
D	3085 mm 10'1"
E	3275 mm 10'9"
F	760 mm 30"
G	65 mm 2.6"
H	3627 mm 11'11"
I	4370 mm 14'4"

*3350 mm **11'0"** is overall height if Komatsu sweeps are installed.

Ground clearance 415 mm **16"**



OPERATING WEIGHT

Tractor shipping weights:

Shipping weight includes blade lift cylinders (C-frame for PAT), ROPS cab, standard track, lubricants, coolant.

EX Sigmadozer/SU.....	18780 kg	41,403 lb
EXi Sigmadozer®.....	18780 kg	41,403 lb
WX Sigmadozer.....	20360 kg	44,886 lb
PX straight.....	20610 kg	45,437 lb
PXi Straight.....	20610 kg	45,437 lb
PX PAT.....	21950 kg	48,391 lb

Operating Weights:

Operating weight includes blade, hitch, ROPS cab, standard track, lubricants, coolant, full fuel tank, and operator.

EX Sigmadozer/SU.....	21270 kg	46,892 lb
EXi Sigmadozer®.....	21270 kg	46,892 lb
WX Sigmadozer.....	22960 kg	50,618 lb
PX straight.....	22830 kg	50,331 lb
PXi Straight.....	22830 kg	50,331 lb
PX PAT.....	23570 kg	51,963 lb

EQUIPMENT



STANDARD EQUIPMENT FOR BASE MACHINE*

- Air cleaner, double element with dust indicator
- Alternator, 90 ampere/24V
- Auto idle shutdown function
- Backup alarm
- Batteries, 200 Ah/2 x 12V
- Battery disconnect switch with lockout/tagout
- Blade lift cylinders
- Color monitor, LCD
- Curved exhaust pipe
- Decelerator pedal
- Engine hood
- Engine intake centrifugal precleaner
- Engine, gull-wing side covers
- Engine shutdown secondary switch
- Fenders
- Front pull hook
- High mount foot rests
- Horn, warning
- Hydraulic driven radiator cooling fan with reverse clean mode
- Hydraulics for rear equipment
- KOMTRAX® Level 5
- Komatsu Diesel Particulate Filter (KDPF)
- Variable Geometry Turbocharger (VGT)
- Locks, filler caps and covers
- Oil pressure check ports for power train
- Oil sampling ports for Engine, Trans, Hydraulics
- Operator ID function
- PM service connector
- Radiator mask, heavy-duty, hinged, perforated
- Rear cover
- ROPS cab**
 - 75 dB operator ear noise level
 - Air conditioner with fresh air pre-cleaner
 - Cab accessories
 - 12V power supply (2 ports)
 - Cup holder
 - Rearview mirror
 - Rearview monitoring (1 camera)
 - Radio, Bluetooth/USB compatible
 - Shovel holder
 - Work lights, LED type
 - 2 front, hood mounted
 - 2 front, cab mounted
 - 1 rear, left fender mounted
 - 2 rear, cab mounted
- Seat, air suspension, fabric, heated low back, rotates 12.5° to right, headrest
- Seat belt, 76 mm **3"**, retractable
- Seat belt indicator
- Sealed electrical connectors
- Secondary engine shutoff switch
- Starting motor, 11.0 kW/24V
- Steering system:
 - Hydrostatic Steering System (HSS)
- Tie-off points standard ISO 14567
- Torque converter with auto lock-up
- Track roller guards, center and end sections
- Track shoe assembly
 - Heavy-Duty lubricated rotary bushing (PLUS) track
 - 610 mm **24"** MS shoe (EX/EXi with outside mount blade)
 - 760 mm **30"** MS shoe (WX with outside mount blade)
 - 760 mm **30"** ES shoe (PX PAT requires Waste Package)
 - 915 mm **36"** MS shoe (PX/PXi with outside mount blade)
- Transmission with auto/manual shift modes
- Underguards, heavy duty
 - Hinged belly pan
 - Transmission
- Water separator
- Wide core cooling package

* Dozer assembly and rear mounted equipment are not included in base machine standard equipment

** Cab meets OSHA/MSHA ROPS and FOPS Level 2 standards