

Crawler Tractors PR 736 PR 746 PR 756

Litronic®

Engine power:	150 kW / 204 HP	185 kW / 252 HP	250 kW / 340 HP
Operating weight:	20,200–24,600 kg 44,530–54,230 lb	28,900–30,800 kg 63,710–67,900 lb	38,300–41,150 kg 84,430–90,720 lb
Emission stage:	IV / Tier 4f	IV / Tier 4f	IV / Tier 4f



LIEBHERR

Basic machine PR 736



Engine

Liebherr diesel engine	D 934 A7 Emission regulations according to 97/68/EC, 2004/26/EC stage IV, EPA/CARB Tier 4f
Rating (ISO 9249)	150 kW / 204 HP
Rating (SAE J1349)	150 kW / 201 HP
Rated speed	1,800 1/min
Displacement	7.0 l / 427 in ³
Design	4-cylinder in-line engine, water-cooled, turbocharged, air-to-air intercooler
Injection system	Direct fuel injection, Common Rail, electronic control
Engine lubrication	Pressurised lube system, engine lubrication guaranteed for inclinations up to 45°
Operating voltage	24 V
Alternator	140 A
Starter	7.8 kW
Batteries	2 x 180 Ah / 12 V
Air cleaner	Dry-type air cleaner with pre-cleaner, main and safety elements, control light in the operator's cab
Cooling system	Combi radiator, comprising a radiator for water, hydraulic fluid, charge air. Hydrostatic fan drive



Travel drive, control

Transmission system	Infinitely variable hydrostatic travel drive, independent drive for each track frame
Travel speed *	Continuously variable
Speed range 1 (reverse)	0-4.0 km/h / 2.5 mph (4.5 km/h / 2.8 mph)
Speed range 2 (reverse)	0-6.0 km/h / 3.7 mph (8.0 km/h / 4.9 mph)
Speed range 3 (reverse)	0-11.0 km/h / 6.8 km/h (11.0 km/h / 6.8 mph)
	* Travel speed ranges can be set on the travel joystick (memory function)
Drawbar pull	275 kN at 1.6 km/h
Electronic system	The electronic system automatically adjusts travel speed and drawbar pull to match changing load conditions
Steering	Hydrostatic
Service brake	Hydrostatic (self locking), wear-free
Parking brake	Multi-disk brake, wear-free, automatically applied with neutral joystick position
Cooling system	Hydraulic oil cooler integrated in combi radiator, hydrostatic fan drive
Filter system	Micro cartridge filters in replenishing circuit
Final drive	Combination spur gear with planetary gear, double-sealed (duo cone seals) with temperature control
Control	Single joystick for all travel and steering functions



Hydraulic equipment

Hydraulic system	Load sensing (demand-controlled)
Pump type	Swash plate piston pump
Pump flow max.	207 l/min / 45.5 gpm
Pressure limitation	260 bar (6-way blade), 200 bar (Straight blade)
Control valve	2 segments, expandable to 4
Filter system	Return filter with magnetic rod in the hydraulic tank
Control	Single joystick for all blade functions



Undercarriage

	L	XL	LGP
Design	Undercarriage with rigid bottom rollers		
Mount	Via separate pivot shafts and an oscillating equaliser bar		
Chains	Lubricated, single-grouser shoes, tension via a steel spring and grease tensioner		
Links, each side	41	45	45
Track rollers, each side	7	7	7
Carrier rollers, each side	2	2	2
Sprocket segments	5	5	5
Track shoes, standard	610 mm / 24"	610 mm / 24"	711 mm / 28"
			812 mm / 32"
Track shoes, optional	560 mm / 22"	560 mm / 22"	914 mm / 36"
			965 mm / 38"



Operator's cab

Cab	Resiliently mounted cab with enclosed positive pressure ventilation, can be tilted with the hand pump 40° to the rear. With integrated ROPS Rollover Protective Structure (EN ISO 3471) and FOPS Falling Objects Protective Structure (EN ISO 3449)
Operator's seat	Air-suspended comfort seat, fully adjustable
Monitoring	Touch screen; display of current machine information, automatic monitoring of operating conditions. Individual setting of machine parameters



Noise emissions

Operator sound exposure	L _{PA} = 78 dB(A)
ISO 6396	(emission at the operator's position)
Exterior sound pressure	L _{WA} = 111 dB(A)
2000/14/EC	(emission in the environment)

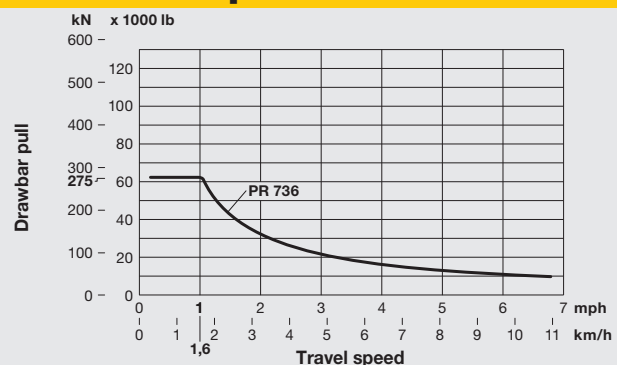


Refill capacities

Fuel tank	430 l / 94.6 Imp.gal
Diesel Exhaust Fluid (DEF) tank	50 l / 11 Imp.gal
Cooling system	41 l / 9 Imp.gal
Engine oil with filter	29 l / 6.4 Imp.gal
Splitter box	5.5 l / 1.2 Imp.gal
Hydraulic tank	111 l / 24.4 Imp.gal
Final drive, each side	Track gauge 1,830 mm / 6'0"
	Track gauge 2,180 mm / 7'2"
	Track gauge 2,290 mm / 7'6"
	15 l / 3.3 Imp.gal
	22 l / 4.8 Imp.gal
	26.5 l / 5.8 Imp.gal

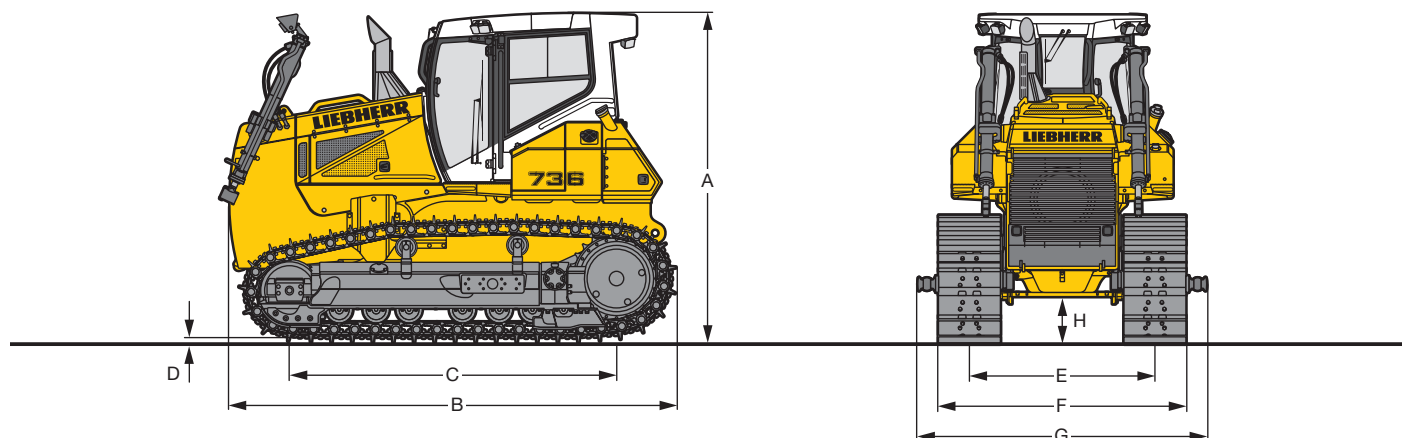


Drawbar pull PR 736



Drawbar pull depends on traction and weight of the tractor.

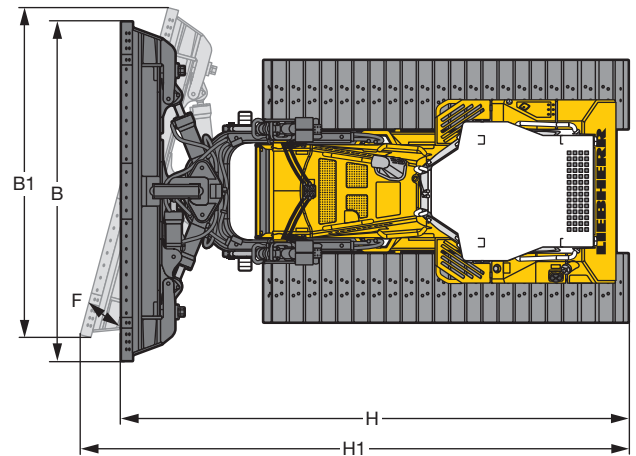
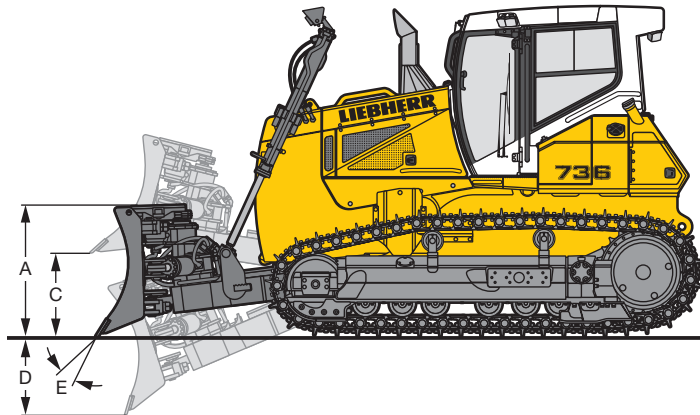
Dimensions PR 736



Dimensions			Undercarriage		L		XL		LGP	
	Push frame		inside	outside	inside	outside	inside	outside	inside	outside
A Height over cab	mm		3,248		3,248		3,248		3,248	
	ft in		10'8"		10'8"		10'8"		10'8"	
B Overall length without attachments	mm		4,428		4,428		4,428		4,428	
	ft in		14'6"		14'6"		14'6"		14'6"	
C Distance idler/sprocket center	mm		2,833		3,237		3,237		3,237	
	ft in		9'4"		10'7"		10'7"		10'7"	
D Height of grouser	mm		65		65		65		65	
	in		2.5"		2.5"		2.5"		2.5"	
H Ground clearance	mm		511		511		511		511	
	in		20"		20"		20"		20"	
E Track gauge	mm		2,180	1,830	2,180	1,830	2,290	2,180		
	ft in		7'2"	6'0"	7'2"	6'0"	7'6"	7'2"		
G Width over trunnions	mm		–	2,724	–	2,724	–	3,474		
	ft in		–	8'11"	–	8'11"	–	11'5"		
Track shoes 560 mm / 22"										
F Width over tracks	mm / ft in		2,740/9'	2,390/7'10	2,740/9'	2,390/7'10	–	–		
Tractor shipping weight ¹	kg / lb		17,495/38,570	17,340/38,228	18,196/40,115	18,271/40,281				
Track shoes 610 mm / 24"										
F Width over tracks	mm / ft in		2,790/7'10"	2,440/8'0"	2,790/7'10"	2,440/8'0"	–	–		
Tractor shipping weight ¹	kg / lb		17,623/38,852	17,468/38,510	18,335/40,422	18,410/40,587				
Track shoes 710 mm / 28"										
F Width over tracks	mm / ft in		–	–	–	–	3,000/9'10"	–		
Tractor shipping weight ¹	kg / lb						18,634/41,081			
Track shoes 812 mm / 32"										
F Width over tracks	mm / ft in		–	–	–	–	3,102/10'2"	2,992/9'10"		
Tractor shipping weight ¹	kg / lb						18,913/41,696	19,156/42,232		
Track shoes 914 mm / 36"										
F Width over tracks	mm / ft in		–	–	–	–	–	3,094/10'2"		
Tractor shipping weight ¹	kg / lb							19,452/42,884		
Track shoes 965 mm / 38"										
F Width over tracks	mm / ft in		–	–	–	–	–	3,145/10'4"		
Tractor shipping weight ¹	kg / lb							19,604/43,219		

¹including coolant, lubricants, 20% fuel, ROPS/FOPS cab, standard track.

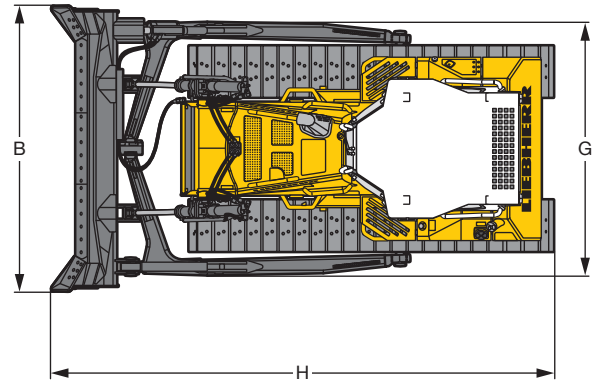
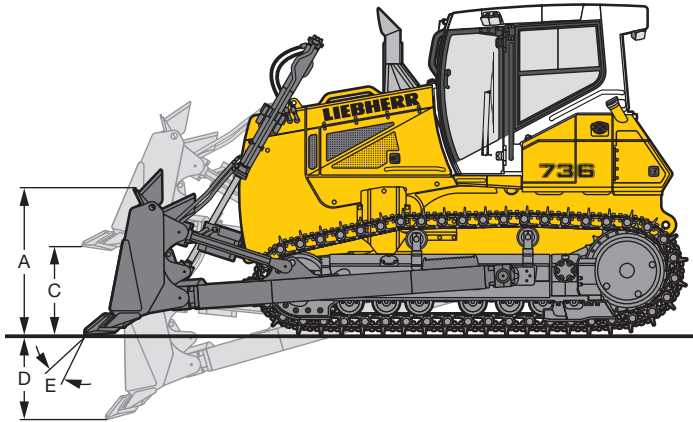
Front attachment PR 736



6-way blade with inside mounted push frame		6-way blade		6-way blade with hinged corners		6-way blade		6-way blade with hinged corners		6-way blade		6-way blade with hinged corners		6-way blade		6-way blade with hinged corners	
Undercarriage		L		L		XL		XL		LGP		LGP					
Blade capacity according to ISO 9246	m ³	4.67		4.67		4.67		4.67		4.63		4.63					
	yd ³	6.11		6.11		6.11		6.11		6.06		6.06					
A Height of blade	mm	1,350		1,350		1,350		1,350		1,250		1,250					
	ft in	4'5"		4'5"		4'5"		4'5"		4'1"		4'1"					
B Width of blade	mm	3,638		3,638		3,638		3,638		4,029		4,029					
	ft in	11'11"		11'11"		11'11"		11'11"		13'3"		13'3"					
B1 Width of blade angled	mm	3,413		3,413		3,413		3,413		3,781		3,781					
	ft in	11'2"		11'2"		11'2"		11'2"		12'5"		12'5"					
Transport width	mm	3,242		2,850		3,242		2,850		3,563		3,000					
	ft in	10'8"		9'4"		10'8"		9'4"		11'8"		9'10"					
C Lifting height	mm	1,327		1,327		1,327		1,327		1,320		1,320					
	ft in	4'4"		4'4"		4'4"		4'4"		4'4"		4'4"					
D Depth below ground	mm	679		679		679		679		675		675					
	ft in	2'3"		2'3"		2'3"		2'3"		2'3"		2'3"					
E Max. blade pitch		5°		5°		5°		5°		5°		5°					
F Angle adjustment		20°		20°		20°		20°		20°		20°					
Max. blade tilt	mm	545		545		545		545		606		606					
	ft in	21.5"		21.5"		21.5"		21.5"		2'		2'					
H Overall length, blade straight	mm	6,077		6,077		6,077		6,077		6,060		6,060					
	ft in	19'11"		19'11"		19'11"		19'11"		19'11"		19'11"					
H1 Overall length, blade angulated	mm	6,655		6,655		6,655		6,655		6,707		6,707					
	ft in	21'10"		21'10"		21'10"		21'10"		22'		22'					
Track shoes 560 mm / 22"																	
Operating weight ¹	kg / lb	20,610 / 45,437		21,032 / 46,368		21,311 / 46,983		21,615 / 47,653		-		-					
	cm ² / PSI	0.65 / 9.24		0.66 / 9.39		0.59 / 8.39		0.60 / 8.53									
Track shoes 610 mm / 24"																	
Operating weight ¹	kg / lb	20,738 / 45,719		21,160 / 46,650		21,450 / 47,289		21,754 / 47,959		-		-					
	cm ² / PSI	0.60 / 8.53		0.61 / 8.67		0.54 / 7.68		0.55 / 7.82									
Track shoes 711 mm / 28"																	
Operating weight ¹	kg / lb	-		-		-		-		21,856 / 48,184		22,350 / 49,273					
	cm ² / PSI									0.48 / 6.83		0.49 / 6.97					
Track shoes 812 mm / 32"																	
Operating weight ¹	kg / lb	-		-		-		-		22,135 / 48,799		22,629 / 49,888					
	cm ² / PSI									0.42 / 5.97		0.43 / 6.11					

¹ Including coolant, lubricants, 20% fuel, ROPS/FOPS cab, operator, standard track, 6-way blade.

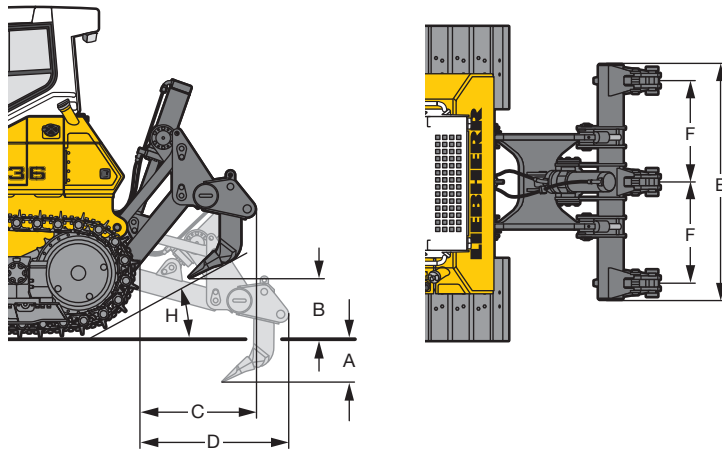
Front attachment PR 736



Semi-U blade and Straight blade		Undercarriage		Semi-U blade L	Semi-U blade XL	Straight blade LGP
Blade capacity according to ISO 9246	m ³			5.56	5.56	4.10
	yd ³			7.27	7.27	5.36
A Height of blade	mm			1,400	1,400	1,150
	ft in			4'7"	4'7"	3'9"
B Width of blade	mm			3,372	3,372	3,995
	ft in			11'1"	11'1"	13'1"
C Lifting height	mm			1,178	1,153	1,162
	ft in			3'10"	3'9"	3'10"
D Depth below ground	mm			528	574	579
	in			20.8"	22.6"	22.8"
E Max. blade pitch				10°	10°	10°
Max. blade tilt	mm			432	432	395
	in			17"	17"	15.6"
G Width over C-frame	mm			3,000	3,000	3,750
	ft in			9'10"	9'10"	12'4"
H Overall length, blade straight	mm			5,751	5,970	5,709
	ft in			18'10"	19'7"	18'9"
Track shoes 560 mm / 22"						
Operating weight ¹	kg / lb			20,167 / 44,461	20,754 / 45,755	–
Ground pressure ¹	cm ² / PSI			0.64 / 9.1	0.53 / 7.54	
Track shoes 610 mm / 24"						
Operating weight ¹	kg / lb			20,295 / 44,743	20,895 / 46,066	–
Ground pressure ¹	cm ² / PSI			0.59 / 8.39	0.53 / 7.54	
Track shoes 812 mm / 32"						
Operating weight ¹	kg / lb			–	–	22,125 / 48,777
Ground pressure ¹	cm ² / PSI					0.42 / 5.97
Track shoes 914 mm / 36"						
Operating weight ¹	kg / lb			–	–	22,421 / 49,430
Ground pressure ¹	cm ² / PSI					0.37 / 5.26
Track shoes 965 mm / 38"						
Operating weight ¹	kg / lb			–	–	22,573 / 49,765
Ground pressure ¹	cm ² / PSI					0.36 / 5.12

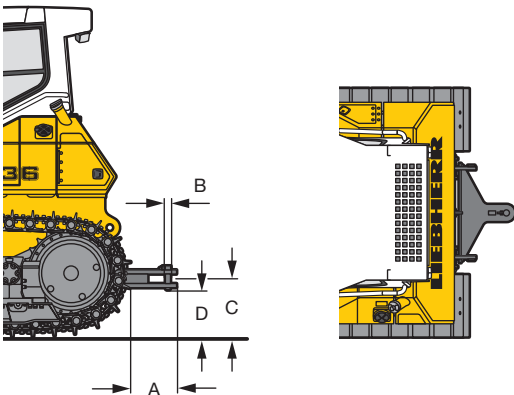
¹ Including coolant, lubricants, 20% fuel, ROPS/FOPS cab, operator, semi-U or straight blade, standard track.

Rear attachment PR 736



Ripper Parallelogram

		3 shanks
A Ripping depth (max./min.)	mm	512 / 362
	ft in	1'8" / 1'2"
B Lifting height (max./min.)	mm	676 / 526
	ft in	2'3" / 1'9"
C Additional length, attachment raised	mm	1,128
	ft in	3'8"
D Additional length, attachment lowered	mm	1,460
	ft in	4'9"
E Toolbar width	mm	2,320
	ft in	7'7"
F Distance between teeth	mm	1,000
	ft in	3'7"
H Ramp angle (max./min.)		34.2° / 28.9°
Max. pitch adjustment		—
Weight	kg	1,919
	lb	4,231



Drawbar		rigid
A Additional length	mm	427
	ft in	16.8"
B Socket pin diameter	mm	50
	ft in	2"
C Height of jaw	mm	518
	in	20.4"
D Ground clearance	mm	430
	in	17"
Jaw opening	mm	95
	ft in	3.7"
Weight	kg	280
	lb	617

Basic machine PR 746



Engine

Liebherr Diesel engine	D 936 A7 Emission regulations according to 97/68/EC, 2004/26/EC Stage IV, EPA/CARB Tier 4f
Rating (ISO 9249)	185 kW / 252 HP
Rating (SAE J1349)	185 kW / 248 HP
Rated speed	1,600 1/min
Displacement	10.5 l / 641 in ³
Design	6 cylinder in-line engine, water-cooled. Turbocharged, air-to-air intercooler
Injection system	Direct fuel injection, Common rail, electronic control
Lubrication	Pressurised lube system, engine lubrication guaranteed for inclinations up to 45°
Operating voltage	24 V
Alternator	140 A
Starter	7.8 kW
Batteries	2 x 180 Ah / 12 V
Air cleaner	Dry-type air cleaner with pre-cleaner, main and safety elements, control light in the operator's cab
Cooling system	Combi radiator, comprising a radiator for water and charge air. Hydrostatic fan drive



Travel drive

Transmission system	Infinitely variable hydrostatic travel drive, independent drive for each track frame
Travel speed *	Continuously variable
Speed range 1 (reverse)	0-4.0 km/h / 2.5 mph (4.5 km/h / 2.8 mph)
Speed range 2 (reverse)	0-6.0 km/h / 3.7 mph (8.0 km/h / 4.9 mph)
Speed range 3 (reverse)	0-11.0 km/h / 6.8 km/h (11.0 km/h / 6.8 mph)
	* Travel speed ranges can be set on the travel joystick
Drawbar pull	385 kN at 1.3 km/h
Electronic system	The electronic system automatically adjusts travel speed and drawbar pull to match changing load conditions
Steering	Hydrostatic
Service brake	Hydrostatic (self-locking), wear-free
Automatic park brake	Multi-disc brake, wear-free, automatically applied with neutral joystick position
Cooling system	Separate oil cooler, hydrostatic fan drive
Filter system	Micro cartridge filter in the replenishing circuit
Final drive	Combination spur gear with planetary gear, double sealed (duo cone seals) with temperature indicator
Control	Proportional single joystick for all travel and steering functions



Hydraulic equipment

Hydraulic system	Load sensing (demand controlled)
Pump type	Swash plate piston pump
Pump flow max.	256 l/min / 53.3 gpm
Pressure limitation	260 bar
Control valve	2 circuits, expandable to 4
Filter system	Return filter with magnetic rod in the hydraulic tank
Control	Single joystick for all blade functions



Undercarriage

	L	LGP
Design	Undercarriage with rigid bottom rollers	
Mount	Separate pivot shafts and an oscillating equaliser bar	
Chains	Lubricated, single grouser shoes, tension via steel spring and grease tensioner	
Links, each side	41	44
Track rollers, each side	7	8
Carrier rollers, each side	2	2
Sprocket segments, each side	6	6
Track shoes standard	610 mm / 24"	812 mm / 32"
Track shoes optional	560 mm / 22"	914 mm / 36"
	711 mm / 28"	



Operator's cab

Cab	Resiliently mounted cab with positive pressure ventilation, can be tilted with the hand pump 40° to the rear. With integrated ROPS Rollover Protective Structure (EN ISO 3471) and FOPS Falling Over Protective Structure (EN ISO 3449)
Operator's seat	Air suspended comfort seat, fully adjustable
Monitoring	Touch screen; display of current machine information, automatic monitoring of operating conditions, individual setting of machine parameters



Noise emissions

Operator sound exposure	$L_{pA} = 78$ dB(A)
ISO 6396	(emission at the operator's position)
Exterior sound pressure	$L_{wA} = 112$ dB(A)
2000/14/EC	(emission in the environment)

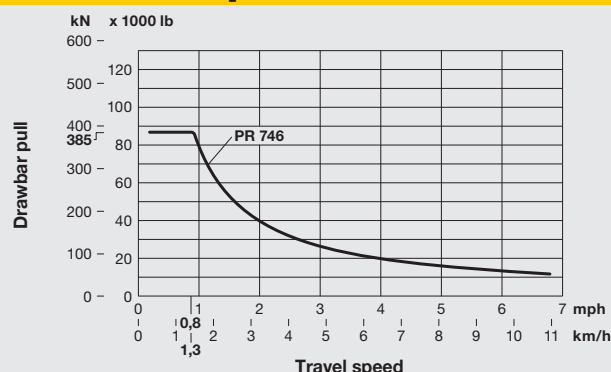


Refill capacities

Fuel tank	505 l / 111.1 Imp.gal
Diesel Exhaust Fluid (DEF) tank	56.5 l / 12.4 Imp.gal
Cooling system	49 l / 10.8 Imp.gal
Engine oil with filter	43 l / 9.5 Imp.gal
Splitter box	8.5 l / 1.9 Imp.gal
Hydraulic tank	112 l / 24.6 Imp.gal
Final drive L, each side	17 l / 3.7 Imp.gal
Final drive LGP, each side	18 l / 4.0 Imp.gal

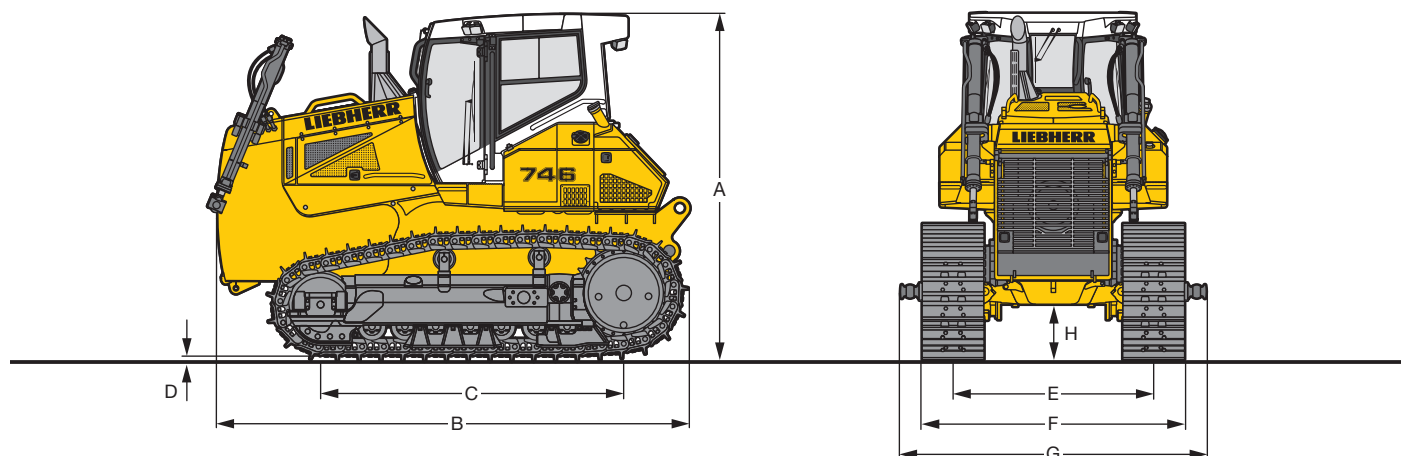


Drawbar pull PR 746



Drawbar pull depends on traction and tractor weight.

Dimensions PR 746

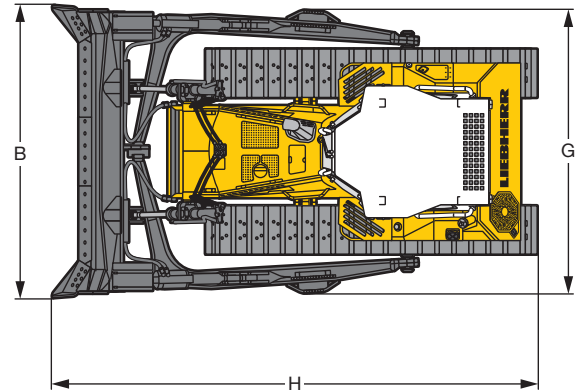
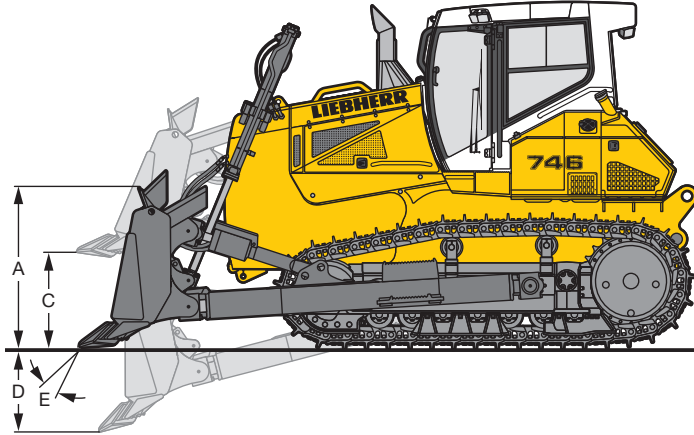


Dimensions

Undercarriage		L	LGP
A Height over cab	mm	3,430	3,430
	ft in	11'3"	11'4"
B Overall length without equipment	mm	4,671	4,671
	ft in	15'4"	15'4"
C Distance idler/sprocket center	mm	2,999	3,323
	ft in	9'10"	10'11"
D Height of grousers	mm	71,5	71,5
	in	2.81"	2.81"
H Ground clearance	mm	551	551
	in	21.7"	21.7"
E Track gauge	mm	1,980	2,180
	ft in	6'6"	7'2"
G Width over trunnions	mm	3,000	3,600
	ft in	9'10"	11'10"
Track shoes 560 mm / 22"			
F Width over tracks	mm / ft in	2,540 / 8'4"	–
Tractor shipping weight ¹	kg / lb	21,644 / 47,717	
Track shoes 610 mm / 24"			
F Width over tracks	mm / ft in	2,590 / 8'6"	–
Tractor shipping weight ¹	kg / lb	21,998 / 48,497	
Track shoes 711 mm / 28"			
F Width over tracks	mm / ft in	2,691 / 8'10"	–
Tractor shipping weight ¹	kg / lb	22,705 / 50,056	
Track shoes 812 mm / 32"			
F Width over tracks	mm / ft in	–	2,992 / 9'10"
Tractor shipping weight ¹	kg / lb		22,769 / 50,197
Track shoes 914 mm / 36"			
F Width over tracks	mm / ft in	–	3,094 / 10'2"
Tractor shipping weight ¹	kg / lb		23,344 / 51,465

¹Including coolant and lubricants, 20% fuel, ROPS/FOPS cab.

Front attachment PR 746

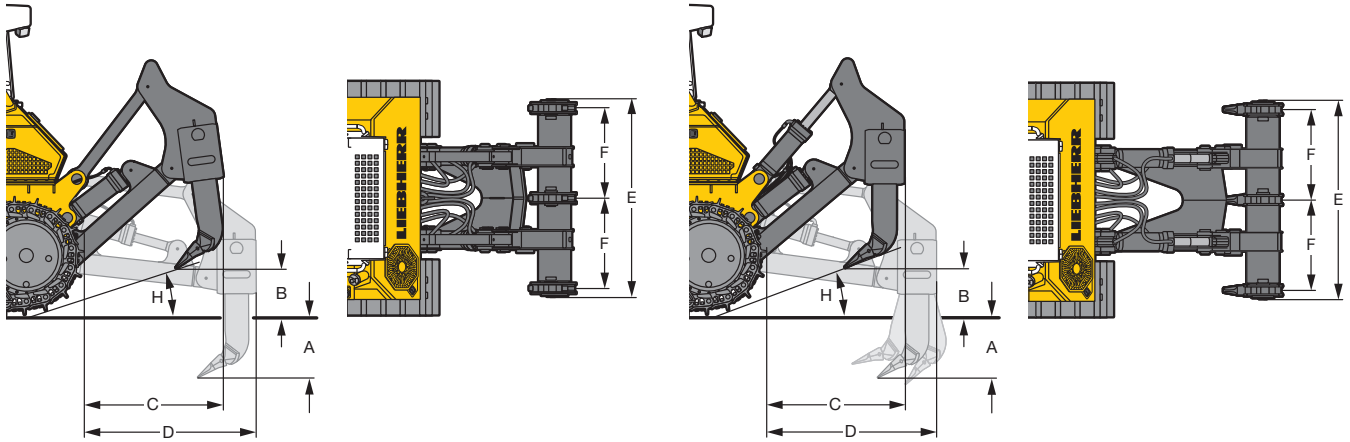


Semi-U blade and Straight blade		Undercarriage		Semi-U blade L	Straight blade ² LGP
Blade capacity according to ISO 9246	m ³			7.20	6.00
	yd ³			9.42	7.85
A Height of blade	mm			1,544	1,320
	ft in			5'1"	4'4"
B Width of blade	mm			3,690	4,518
	ft in			12'1"	14'10"
C Lifting height	mm			1,244	1,185
	ft in			4'1"	3'11"
D Depth below ground	mm			515	610
	in			20.28"	24"
E Max. blade pitch				10°	10°
Max. blade tilt	mm			562	567
	in			22.13"	22.37"
G Width over C-frame	mm			3,556	4,034
	ft in			11'8"	13'3"
H Overall length, blade straight	mm			6,129	5,955
	ft in			20'1"	19'6"
Track shoes 560 mm / 22"					
Tractor shipping weight ¹	kg / lb			25,551 / 56,330	—
Ground pressure ¹	cm ² / PSI			0.76 / 10.81	
Track shoes 610 mm / 24"					
Tractor shipping weight ¹	kg / lb			25,905 / 57,111	—
Ground pressure ¹	cm ² / PSI			0.70 / 9.95	
Track shoes 711 mm / 28"					
Tractor shipping weight ¹	kg / lb			26,612 / 58,669	—
Ground pressure ¹	cm ² / PSI			0.62 / 8.82	
Track shoes 812 mm / 32"					
Tractor shipping weight ¹	kg / lb			—	26,922 / 59,353
Ground pressure ¹	cm ² / PSI				0.50 / 7.11
Track shoes 914 mm / 36"					
Tractor shipping weight ¹	kg / lb			—	27,497 / 60,620
Ground pressure ¹	cm ² / PSI				0.45 / 6.4

¹ Including coolant and lubricants, 20% fuel, ROPS/FOPS cab, operator, semi-U or straight blade.

² Rear equipment or counterweight is recommended.

Rear attachment PR 746



Ripper Parallelogram		3-shanks ripper		1-shank ripper
		standard	with hydraulic pitch adjustment	with hydraulic pitch adjustment
A Ripping depth (max./min.)	mm	743 / 443	743 / 443	900 / 570
	ft in	2'5" / 1'5"	2'5" / 1'5"	2'11" / 1'10"
B Lifting height (max./min.)	mm	759 / 461	765 / 465	638 / 308
	ft in	2'6" / 1'6"	2'6" / 1'6"	2'1" / 1'0"
C Additional length, attachment raised	mm	1,511	1,494	1,509
	ft in	4'11"	4'11"	4'11"
D Additional length, attachment lowered	mm	1,862	1,891	1,876
	ft in	6'1"	6'2"	6'2"
E Toolbar width	mm	2,184	2,184	1,360
	ft in	7'2"	7'2"	4'6"
F Distance between teeth	mm	1,000	1,000	—
	ft in	3'3"	3'3"	
H Ramp angle (max./min.)		29,3° / 18,2°	29,3° / 20,2°	28,8° / 15,6°
Max. pitch adjustment		—	25°	25°
Weight	kg	3,323	3,334	2,730
	lb	7,326	7,350	6,019

Basic machine PR 756



Engine

Liebert diesel engine	D 946 A7 Emission regulations according to 97/68/EC, 2004/26/EC stage IV, EPA/CARB Tier 4f
Rating (ISO 9249)	250 kW / 340 HP
Rating (SAE J1349)	250 kW / 336 HP
Rated speed	1,600 1/min
Displacement	12 l / 733 in ³
Design	6-cylinder in-line engine, water-cooled, turbocharged, air-to-air intercooler
Injection system	Direct fuel injection, Common Rail, electronic control
Lubrication	Pressurised lube system, engine lubrication guaranteed for inclinations up to 45°
Operating voltage	24 V
Alternator	140 A
Starter	7.8 kW
Batteries	4 x 95 Ah / 12 V
Air cleaner	Dry-type air cleaner with pre-cleaner, main and safety elements, control light in the operator's cab
Cooling system	Combi radiator, comprising a radiator for water and charge air. Hydrostatic fan drive



Travel drive, control

Transmission system	Infinitely variable hydrostatic travel drive, independent drive for each track
Travel speed *	Continuously variable
Speed range 1 (reverse)	0-4.0 km/h / 2.5 mph (4.5 km/h / 2.8 mph)
Speed range 2 (reverse)	0-6.0 km/h / 3.7 mph (8.0 km/h / 4.9 mph)
Speed range 3 (reverse)	0-11.0 km/h / 6.8 km/h (11.0 km/h / 6.8 mph)
	* Travel speed ranges can be set on the travel joystick
Drawbar pull	510 kN at 1.4 km/h
Electronic system	The electronic system automatically adjusts travel speed and drawbar pull to match changing load conditions
Steering	Hydrostatic
Service brake	Hydrostatic (self locking), wear-free
Parking brake	Multi-disc brake, wear-free, automatically applied with neutral joystick position
Cooling system	Separate oil cooler, hydraulic fan drive
Filter system	Micro cartridge filter in replenishing circuit
Final drive	Combination spur gear with planetary gear, double sealed (duo cone seals) with temperature indicator
Control	Single proportional joystick for all travel and steering functions



Hydraulic equipment

Hydraulic system	Load sensing (demand-controlled)
Pump type	Swash plate piston pump
Pump flow, max.	256 l/min / 56.3 gpm
Pressure limitation	260 bar
Control valve	2 segments, expandable to 4
Filter system	Return filter with magnetic rod in the hydraulic tank
Control	Single joystick for all blade functions



Undercarriage

	XL
Design	Undercarriage with rigid bottom rollers or bogie suspension
Mount	Via separate pivot shafts and an oscillating equalizer bar
Chains	Lubricated, single grouser shoes, tension via steel spring and grease tensioner
Links, each side	44
Track rollers, each side	7
Carrier rollers, each side	2
Sprocket segments	5 each side
Track shoes standard	610 mm / 24"
Track shoes optional	560 mm / 22", 711 mm / 28"



Operator's cab

Cab	Resiliently mounted cab with positive pressure ventilation, can be tilted with hand pump 40° to the rear. With integrated ROPS Rollover Protective Structure (EN ISO 3471) and Falling Objects Protective Structure (EN ISO 3449)
Operator's seat	Air suspended comfort seat, fully adjustable
Monitoring	Touch screen; display of current machine information, automatic monitoring of operating conditions, individual setting of machine parameters



Noise emissions

Operator sound exposure	$L_{pA} = 78$ dB(A)
ISO 6396	(emission at the operator's position)
Exterior sound pressure	$L_{wA} = 113$ dB(A)
2000/14/EC	(emission in the environment)

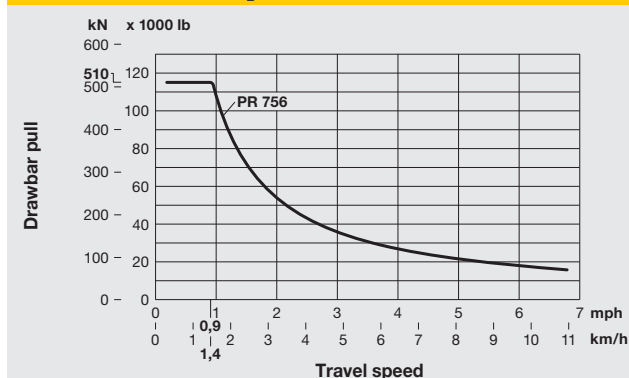


Refill capacities

Fuel tank	660 l / 145.2 Imp.gal
Diesel Exhaust Fluid (DEF) tank	80 l / 17.6 Imp.gal
Cooling system	55 l / 12.1 Imp.gal
Engine oil with oil filters	43 l / 9.5 Imp.gal
Splitter box	8.5 l / 1.9 Imp.gal
Hydraulic tank	129 l / 28.4 Imp.gal
Final drive, each side	20 l / 4.4 Imp.gal

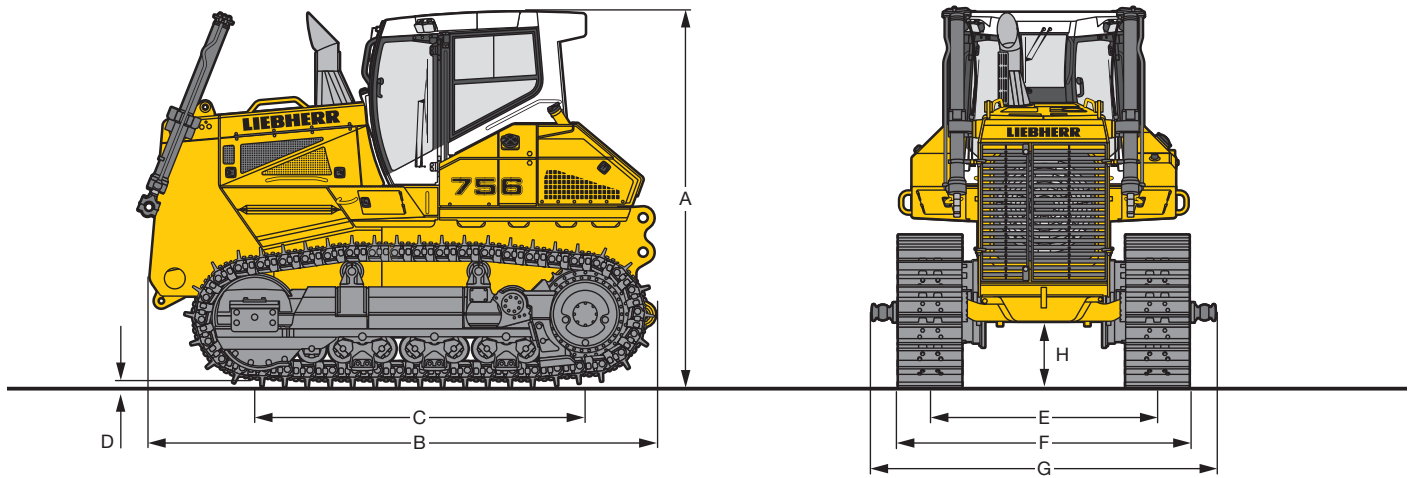


Drawbar pull PR 756



Drawbar pull will depend on traction and weight fo tractor.

Dimensions PR 756

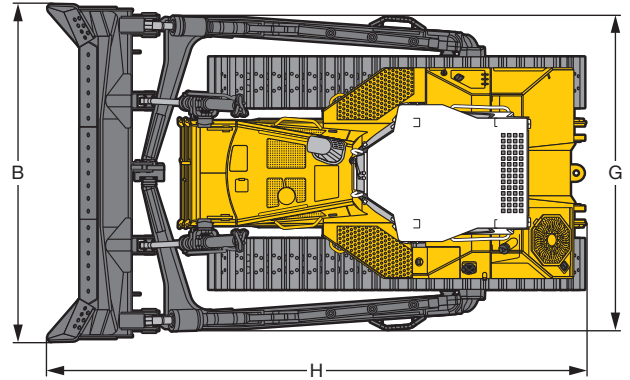
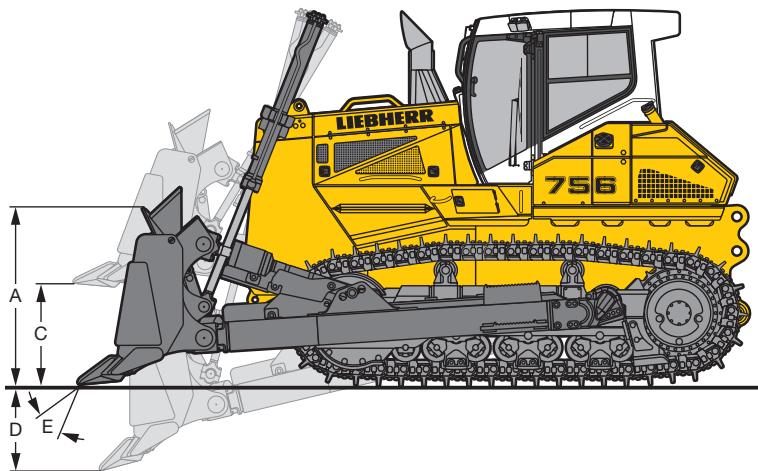


Dimensions

Dimensions				
Undercarriage			rigid bottom rollers	single bogie suspension
A	Height over cab	mm	3,605	
		ft in	11'10"	
B	Length without attachment	mm	4,885	
		ft in	16'	
C	Distance idler/sprocket center	mm	3,174	
		ft in	10'5"	
D	Height of grousers	mm	83	
		in	3.27"	
H	Ground clearance	mm	635	
		in	25"	
E	Track gauge	mm	2,180	
		ft in	7'2"	
G	Width over trunnions	mm	3,145	
		ft in	10'4"	
Track shoes 560 mm / 22"				
F	Width over tracks	mm / ft in	2,740 / 9'	2,740 / 9'
	Tractor shipping weight ¹	kg / lb	28,806 / 63,506	29,733 / 65,550
Track shoes 610 mm / 24"				
F	Width over tracks	mm / ft in	2,790 / 9'2"	2,790 / 9'2"
	Tractor shipping weight ¹	kg / lb	29,046 / 64,035	29,973 / 66,079
Track shoes 711 mm / 28"				
F	Width over tracks	mm / ft in	2,891 / 9'6"	2,891 / 9'6"
	Tractor shipping weight ¹	kg / lb	29,523 / 65,087	30,450 / 67,131

¹ Including coolant and lubricants, 20% fuel, ROPS/FOPS cab.

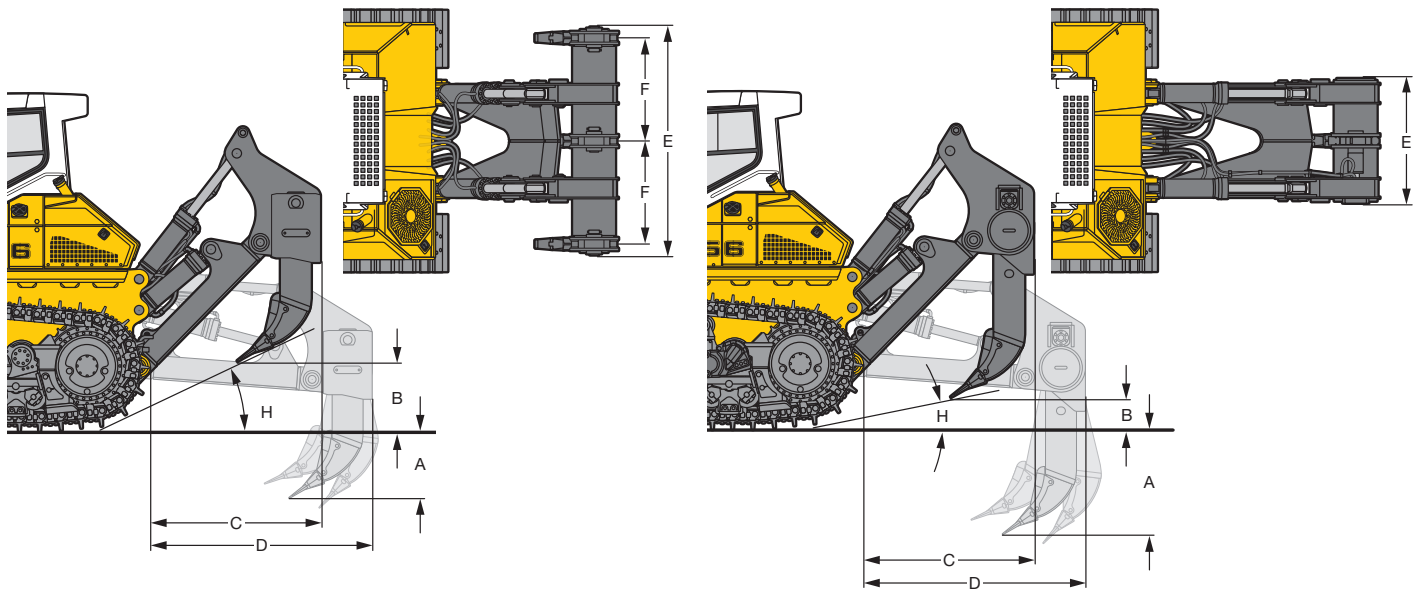
Front attachment PR 756



Semi-U blade			
Undercarriage		rigid bottom rollers	single bogie suspension
Blade capacity according to ISO 9246	m ³ yd ³		8,92 11.67
A Height of blade	mm ft in		1,650 5'5"
B Width of blade	mm ft in		4,044 13'3"
C Lifting height	mm ft in		1,372 4'6"
D Depth below ground	mm ft in		570 1'10"
E Max. blade pitch			10°
Max. blade tilt	mm ft in		570 1'10"
H Overall length, blade straight	mm ft in		6,449 21'2"
Track shoes 560 mm / 22"			
Operating weight ¹	kg / lb	34,650 / 76,390	35,577 / 78,434
Ground pressure ¹	cm ² / PSI	0.97 / 13.79	1.00 / 14.22
Track shoes 610 mm / 24"			
Operating weight ¹	kg / lb	34,890 / 76,919	35,817 / 78,963
Ground pressure ¹	cm ² / PSI	0.90 / 12.8	0.92 / 13.08
Track shoes 711 mm / 28"			
Operating weight ¹	kg / lb	35,367 / 77,971	36,294 / 80,014
Ground pressure ¹	cm ² / PSI	0.78 / 11.09	0.80 / 11.38

¹ Including coolant and lubricants, 20 % fuel, ROPS/FOPS cab, semi-U blade, operator.

Rear attachment PR 756



Ripper Parallelogram		3-shanks ripper with hydraulic pitch adjustment	1-shank ripper with hydraulic pitch adjustment
A Ripping depth (max./min.)	mm	796 / 481	1,203 / 423
	ft in	2'7" / 1'7"	3'11" / 1'5"
B Lifting height (max./min.)	mm	982 / 667	1,040 / 260
	ft in	3'3" / 2'2"	3'5" / 10.24"
C Additional length, attachment raised	mm	1,820	1,820
	ft in	6'	6'
D Additional length, attachment lowered	mm	2,373	2,374
	ft in	7'9"	7'9"
E Toolbar width	mm	2,434	1,370
	ft in	8'	4'6"
F Distance between teeth	mm	1,100	—
	ft in	3'7"	
H Ramp angle (max./min.)		33,6° / 25,4°	34,9° / 11,2°
Max. pitch adjustment		31°	31°
Max. penetration force	kN	131,8	123,9
	lb	29,630	27,854
Pryout force	kN	208,8	208,8
	lb	46,940	46,940
Weight	kg	4,821	3,638
	lb	10,628	8,020

Equipment



Basic machine

	736	746	756
Towing hitch rear	•	•	•
Towing lug front	•	•	•
Battery compartment, lockable	•	•	•
Radiator, wide-meshed	•	•	•
Radiator guard, heavy duty	+	+	+
Radiator guard, hinged	+	+	+
LIDAT – Data transmission system	•	•	•
Liebherr diesel engine emission stage IV / Tier 4f	•	•	•
Engine compartment doors, lockable	•	•	•
Lugs for crane lifting, front	•	•	•
Lugs for crane lifting, rear	+	+	+
Fuel water separator	•	•	•
Fuel water separator, with electric heater	+	+	+
Fuel pre-filter	•	•	•
Fuel pre-filter, with electric heater	+	+	+
Air filter, dry type, dual step	•	•	•
Pre-cleaner with automatic dust ejector	+	+	+
Air pre-cleaner Top Air / Sy-Klone	+	+	+
Forestry equipment	+	+	+
Landfill equipment	+	+	+
Coal equipment	+	+	+
Woodchip equipment	+	+	+
Cold environment equipment	+	+	+
Fan, hydraulically driven	•	•	•
Fan, reversible	+	+	+
Liebherr hydraulic oil, biologically degradable	+	+	+
Refuelling pump, electric	+	+	+
Special paint	+	+	+
Grade control ready kit	+	1)	1)
Diesel Exhaust Fluid (DEF) tank, lockable	+	+	+
Additional handle on cab footstep	+	+	+
Additional handle on fuel tank	+	+	+



Travel drive

	736	746	756
Parking brake, automatic	•	•	•
Travel drive joystick, proportional	•	•	•
Travel drive joystick, detented	+	+	+
Load limit control, electronic	•	•	•
Travel control, 3 speed ranges	•	•	•
Travel drive, hydrostatic	•	•	•
Inching brake pedal	+	•	•
Emergency stop	•	•	•
Final drives planetary gear	•	•	•
Seat contact switch	•	•	•



Undercarriage

	736	746	756
Track frame, closed	•	•	•
Sprocket segments, bolted	•	•	•
Master link, two-piece	•	•	•
Tracks, oil-lubricated	•	•	•
Undercarriage with rigid bottom rollers	•	•	•
Undercarriage with single-bogie suspension	-	-	+
Undercarriage with free turning bushes FTB	+	-	-
Track shoes, moderate service	•	•	-
Track shoes, heavy duty ¹⁾	-	+	•
Track shoes with mud holes	+	+	+
Track guide, front and rear (with rigid bottom rollers)	•	•	•
Track guide center part (with rigid bottom rollers)	+	+	+
Track guard, full length (with rigid bottom rollers)	+	+	+
Track guide (undercarriage with single bogie suspension)	-	-	•
Sprocket segments with recesses	+	+	+
Undercarriage L	+	+	-
Undercarriage XL	+	-	+
Undercarriage LGP	+	+	1)



Operator's cab

	736	746	756
Stowage compartment, air-conditioned	•	•	•
Armrests 3D adjustable	•	•	•
Pressurised cab	•	•	•
Warm water heating	•	•	•
Air-conditioner	•	•	•
Operator's seat Comfort, air-suspended	•	•	•
Operator's seat Premium	+	+	+
Footrest on the right side of the front console	+	+	+
Joysticks, longitudinally adjustable	•	•	•
Dome light	•	•	•
Coat hook	•	•	•
ROPS/FOPS integrated	•	•	•
Rear mirror, inside	•	•	•
Sun visor, front	+	+	+
Socket 12 V	•	•	•
Fire extinguisher in the cab	+	+	+
Radio preparation kit	•	•	•
Radio	+	+	+
Rear view camera	+	+	+
Windshield washer system	•	•	•
Windshield wipers front, rear, doors, with intermittent function	•	•	•
Sliding window left	•	•	•
Sliding window right	+	+	+
Safety glass tinted	•	•	•
Protective grids for windows	+	+	+
Additional control panel for air conditioning on side console	+	+	+
Extension of cab door footstep	+	+	-
Touch-controlled color display	•	•	•



Electrical system

	736	746	756
4 working light on the cab, front	•	•	•
2 working lights on the cab, rear	•	•	•
1 working light on each lift cylinder	•	•	•
2 additional working light on the cab, rear	+	+	+
1 additional working light on each lift cylinder	+	+	+
1 additional working light on the ripper	-	-	+
All working lights in LED version	+	+	+
2 cold start batteries	•	•	•
Battery main switch	•	•	•
Battery main switch, lockable	+	+	+
On-board voltage 24 V	•	•	•
Horn	•	•	•
Back-up alarm	+	+	+
Back-up alarm, switchable	+	+	+
Back-up alarm, acoustic and visual	+	+	+
Beacon	+	+	+
Immobiliser, electronic	+	+	+

• = Standard, + = Option, - = not available

1) on demand at your dealer

Options and/or special attachments, supplied by vendors other than Liebherr, are only to be installed with the knowledge and approval of Liebherr to retain warranty.



Control and warning lights

	736	746	756
Indicator date and clock	•	•	•
Indicator diesel engine speed	•	•	•
Indicator diesel engine preheating	•	•	•
Indicator travel speed ranges	•	•	•
Indicator fuel level	•	•	•
Indicator Diesel Exhaust Fluid (DEF) level	•	•	•
Indicator ECO-mode	•	•	•
Indicator engine coolant temperature	•	•	•
Indicator hydraulic oil temperature	•	•	•
Indicator float position blade	•	•	•
Indicator parking brake	•	•	•
Indicator rear view camera	+	+	+
Indicator hydraulic oil return filter contamination	•	•	•
Indicator air filter contamination	•	•	•
Hour meter	•	•	•
Warning light battery charge	•	•	•
Warning light diesel engine	•	•	•
Warning light travel drive oil temperature	•	•	•
Warning light fuel water separator	•	•	•
Warning light reversible fan	+	+	+
Warning light pump replenishing pressure	•	•	•
Warning light oil level in hydraulic oil tank	•	•	•
Warning light exhaust gas aftertreatment	•	•	•
Service-notification	•	•	•



Hydraulic system

	736	746	756
Variable flow pump, load-sensing	•	•	•
Oil filter in hydraulic tank	•	•	•
Control block for 2 circuits	•	•	•
Quick drop function blade	•	•	•
Float position blade	•	•	•
Hydraulic kit for ripper	+	+	+
Hydraulic kit for winch	+	+	+



Attachments front

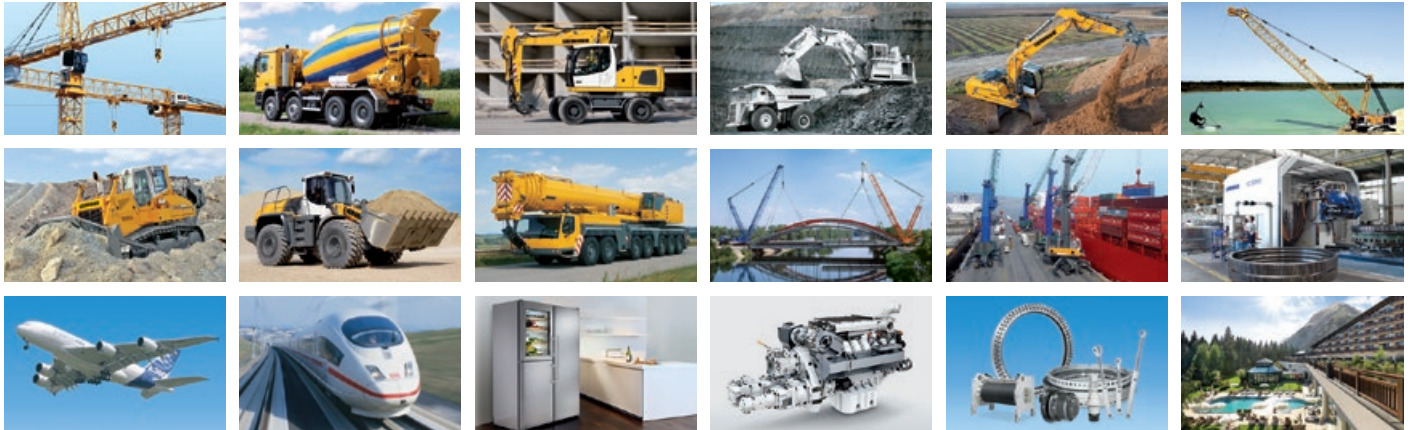
	736	746	756
Semi-U blade	+	+	+
Straight blade	+	+	1)
U blade	1)	1)	+
6-way blade	+	-	-
6-way blade with hingeable corners	+	-	-
Mechanical angle blade	+	+	+
Wear plates on semi-U blade	+	+	+
Wear plates on push frame	+	+	+
Guards for hydraulic cylinders, 6-way blade	+	-	-
Guards for hydraulic cylinders, semi-U blade	-	-	+
Spill plate	+	+	+
Trash rack	+	+	+



Attachments rear

	736	746	756
Drawbar rear, rigid	+	+	+
Mounting plate for external tools	+	+	+
Counterweight, rear	+	+	+
Ripper, 1 shank	+	+	+
Ripper, 1 shank with hydraulic pin puller	-	-	+
Ripper, 3 shanks	+	+	+
Winch	+	+	+

The Liebherr Group of Companies



Wide Product Range

The Liebherr Group is one of the largest construction equipment manufacturers in the world. Liebherr's high-value products and services enjoy a high reputation in many other fields. The wide range includes domestic appliances, aerospace and transportation systems, machine tools and maritime cranes.

Exceptional Customer Benefit

Every product line provides a complete range of models in many different versions. With both their technical excellence and acknowledged quality, Liebherr products offer a maximum of customer benefits in practical application.

State-of-the-art Technology

To provide consistent, top quality products, Liebherr attaches great importance to each product area, its components and core technologies. Important modules and components are developed and manufactured in-house, for instance the entire drive and control technology for construction equipment.

Worldwide and Independent

Hans Liebherr founded the Liebherr family company in 1949. Since that time, the enterprise has steadily grown to a group of more than 130 companies with over 38,000 employees located on all continents. The corporate headquarters of the Group is Liebherr-International AG in Bulle, Switzerland. The Liebherr family is the sole owner of the company.

www.liebherr.com

Liebherr-Werk Telfs GmbH

Hans Liebherr-Straße 35, A-6410 Telfs

☎ +43 50809 6-100, Fax +43 50809 6-7772

www.liebherr.com, E-Mail: lwt.marketing@liebherr.com

www.facebook.com/LiebherrConstruction