

General specification

Engine*

Model	Komatsu SAA6D107E-3*		
Type	Water-cooled, 4-cycle, direct injection		
Aspiration	Komatsu variable geometry turbocharged, aftercooled, cooled EGR		
Number of cylinders	6		
Bore x stroke	107 mm x 124 mm 4.21" x 4.88"		
Piston displacement	6.69 L 408 in ³		
Horsepower			
SAE J1995	Gross	159 kW	213 HP
ISO 9249 / SAE J1349	Net	147 kW	196 HP
	Rated rpm	2,050	
Fan drive method for radiator cooling	Mechanical		
Governor	All-speed control, electronic		

*EPA Tier 4 Final emissions certified.

Hydraulics

Type	HydrauMind (Hydraulic Mechanical Intelligence) system, closed-center system with load sensing valves and pressure compensated valves		
Number of selectable working modes	6		
Main pump			
Type	Variable displacement piston type		
Pumps for	Boom, arm, bucket, swing, and travel circuits		
Maximum flow	479 L/min	126.5 gal/min	
Supply for control circuit	Self-reducing valve		
Hydraulic motors			
Travel	2 x axial piston motors with parking brake		
Swing	1 x axial piston motor with swing holding brake		
Relief valve setting			
Implement circuits	37.3 MPa	380 kg/cm ²	5,400 psi
Travel circuit	37.3 MPa	380 kg/cm ²	5,400 psi
Swing circuit	28.9 MPa	295 kg/cm ²	4,190 psi
Pilot circuit	3.2 MPa	33 kg/cm ²	470 psi
Hydraulic cylinders (Number of cylinders – bore x stroke x rod diameter)			
Boom	2-140 mm x 1300 mm x 100 mm	5.5" x 51.2" x 3.9"	
Arm	1-150 mm x 1635 mm x 110 mm	5.9" x 64.3" x 4.3"	
Bucket	1-140 mm x 1009 mm x 100 mm	5.5" x 39.7" x 3.9"	

Drives and brakes

Steering control	Two levers with pedals		
Drive method	Hydrostatic		
Maximum drawbar pull	249 kN	25,400 kg	56,000 lbs.
Gradeability	70%, 35"		
Maximum travel speed			
	High	5.5 km/h	3.4 mph
	(Auto-shift) Mid	4.1 km/h	2.5 mph
	(Auto-shift) Low	3.0 km/h	1.9 mph
Service brake	Hydraulic lock		
Parking brake	Mechanical disc brake		

Swing system

Drive method	Hydrostatic
Swing reduction	Planetary gear
Swing circle lubrication	Grease-bathed
Service brake	Hydraulic lock
Holding brake/Swing lock	Mechanical disc brake
Swing speed	10.5 rpm
Swing torque	8,889 kg·m 64,292 ft. lbs.

Undercarriage

Center frame	X-frame
Track frame	Box-section
Seal of track	Sealed track
Track adjuster	Hydraulic
Number of shoes (each side)	48
Number of carrier rollers (each side)	2
Number of track rollers (each side)	8

Coolant and lubricant capacity (refilling)

Fuel tank	400 L	105.7 U.S. gal
Coolant	36 L	9.5 U.S. gal
Engine	23.1 L	6.1 U.S. gal
Final drive, each side	8.0 L	2.1 U.S. gal
Swing drive	7.2 L	1.9 U.S. gal
Hydraulic tank	132 L	34.9 U.S. gal
Hydraulic system	253 L	66.8 U.S. gal
DEF tank	23.1 L	6.1 U.S. gal

Sound performance

Exterior – ISO 6395	104 dB(A)
Operator – ISO 6396	70 dB(A)

Operating weight (approximate)*

Operating weight includes 6,150 mm 20'2" one-piece boom, 3,200 mm 10'6" arm, SAE heaped 1.63 m³ 2.13 yd³ bucket, rated capacity of lubricants, coolant, full fuel tank, operator, and standard equipment.

Triple-grouser shoes	Operating weight	Ground pressure ISO 16754
700 mm 28"	32,070 kg 70,702 lbs.	0.53 kg/cm ² 7.48 psi
800 mm 31.5"	32,450 kg 71,540 lbs.	0.46 kg/cm ² 6.63 psi
850 mm 33.5"	32,700 kg 72,091 lbs.	0.44 kg/cm ² 6.28 psi

*See equipment page for option availability.

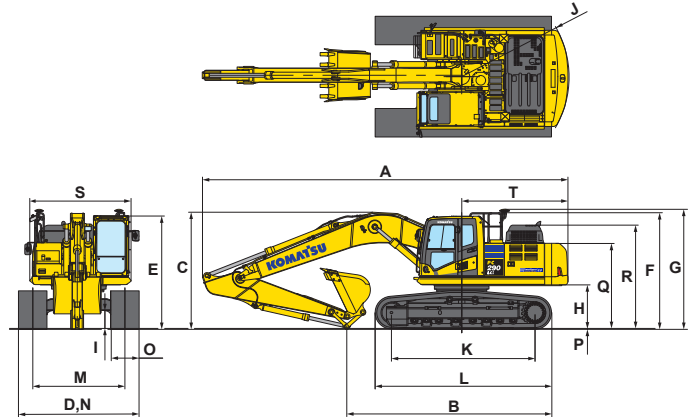
Component weights

Arm including bucket cylinder and linkage		
3,200 mm 10'6" arm assembly	1,432 kg	3,157 lbs.
3,500 mm 11'6" arm assembly	1,504 kg	3,316 lbs.
One piece boom including arm cylinder		
6,150 mm 20'2" boom assembly	2,448 kg	5,397 lbs.
Boom cylinders x 2	231 kg	509 lbs.
Counterweight	5,200 kg	11,464 lbs.
1.63 m ³ 2.13 yd ³ bucket - 54" width	1,168 kg	2,576 lbs.

Dimensions

Arm Length	3,200 mm	10'6"	3,500 mm	11'6"
A Overall length	10,265 mm	33'8"	10,275 mm	33'8"
B Length on ground (transport)	5,770 mm	18'11"	5,495 mm	18'0"
C Overall height (to top of boom)*	3,295 mm	10'10"	3,375 mm	11'0"
D Overall width	3,390 mm	11'1"		
E Overall height (to top of cab)*	3,180 mm	10'5"		
F Overall height (to top of handrail)*	3,275 mm	10'9"		
G Overall height (to top of GNSS antenna)*	3,345 mm	11'0"		
H Ground clearance, counterweight	1,215 mm	4' 0"		
I Ground clearance, minimum	495 mm	1'7"		
J Tail swing radius	3,020 mm	9'11"		
K Track length on ground	4,030 mm	13'3"		
L Track length	4,955 mm	16'3"		
M Track gauge	2,590 mm	8'6"		
N Width of crawler	700 mm 28" shoe	3,290 mm	10'7"	
	800 mm 31.5" shoe	3,390 mm	11'1"	
	850 mm 33.5" shoe	3,440 mm	11'3"	
O Shoe width	800 mm	31.5"		
P Grouser height	36 mm	1.4"		
Q Machine cab height	2,380 mm	7'10"		
R Machine height to top of engine cover	2,895 mm	9'6"		
S Machine upper width	2,850 mm	9'4"		
T Distance, swing center to rear end	2,985 mm	9'10"		

*Including grouser height



Backhoe bucket, arm and boom combination

Bucket type	Capacity		Bucket Width		Weight		6.15 m (20'2") Boom	
							3.2 m (10'6")	3.5 m (11'6")
Komatsu TL	0.58 m ³	0.76 yd ³	610 mm	24"	717 kg	1,571 lbs.	●	●
	0.78 m ³	1.02 yd ³	762 mm	30"	837 kg	1,846 lbs.	●	●
	0.99 m ³	1.29 yd ³	914 mm	36"	938 kg	2,067 lbs.	●	●
	1.20 m ³	1.57 yd ³	1,067 mm	42"	1,018 kg	2,245 lbs.	●	●
	1.41 m ³	1.85 yd ³	1,219 mm	48"	1,090 kg	2,404 lbs.	○	○
Komatsu HP	0.58 m ³	0.76 yd ³	610 mm	24"	717 kg	1,581 lbs.	●	●
	0.78 m ³	1.02 yd ³	762 mm	30"	929 kg	2,049 lbs.	●	●
	0.99 m ³	1.29 yd ³	914 mm	36"	1,051 kg	2,317 lbs.	●	●
	1.20 m ³	1.57 yd ³	1,067 mm	42"	1,151 kg	2,538 lbs.	●	●
	1.41 m ³	1.85 yd ³	1,219 mm	48"	1,273 kg	2,807 lbs.	○	○
Komatsu HPS	0.58 m ³	0.76 yd ³	610 mm	24"	848 kg	1,871 lbs.	●	●
	0.78 m ³	1.02 yd ³	762 mm	30"	990 kg	2,184 lbs.	●	●
	0.99 m ³	1.29 yd ³	914 mm	36"	1,125 kg	2,481 lbs.	●	●
	1.20 m ³	1.57 yd ³	1,067 mm	42"	1,239 kg	2,731 lbs.	●	●
	1.41 m ³	1.85 yd ³	1,219 mm	48"	1,338 kg	2,950 lbs.	○	○
Komatsu HPX	0.58 m ³	0.76 yd ³	610 mm	24"	951 kg	2,097 lbs.	●	●
	0.78 m ³	1.02 yd ³	762 mm	30"	1,092 kg	2,408 lbs.	●	●
	0.99 m ³	1.29 yd ³	914 mm	36"	1,233 kg	2,719 lbs.	●	●
	1.20 m ³	1.57 yd ³	1,067 mm	42"	1,354 kg	2,984 lbs.	●	○
	1.41 m ³	1.85 yd ³	1,219 mm	48"	1,475 kg	3,252 lbs.	○	○
	1.63 m ³	2.13 yd ³	1,372 mm	54"	1,585 kg	3,494 lbs.	□	⊙

For best semi-automatic machine control performance, observe maximum attachment weights:

- 2,100 kg 4,629 lbs. maximum for 3,200 mm 10'6" standard arm assembly
- 2,060 kg 4,541 lbs. maximum for 3,500 mm 11'6" standard arm assembly

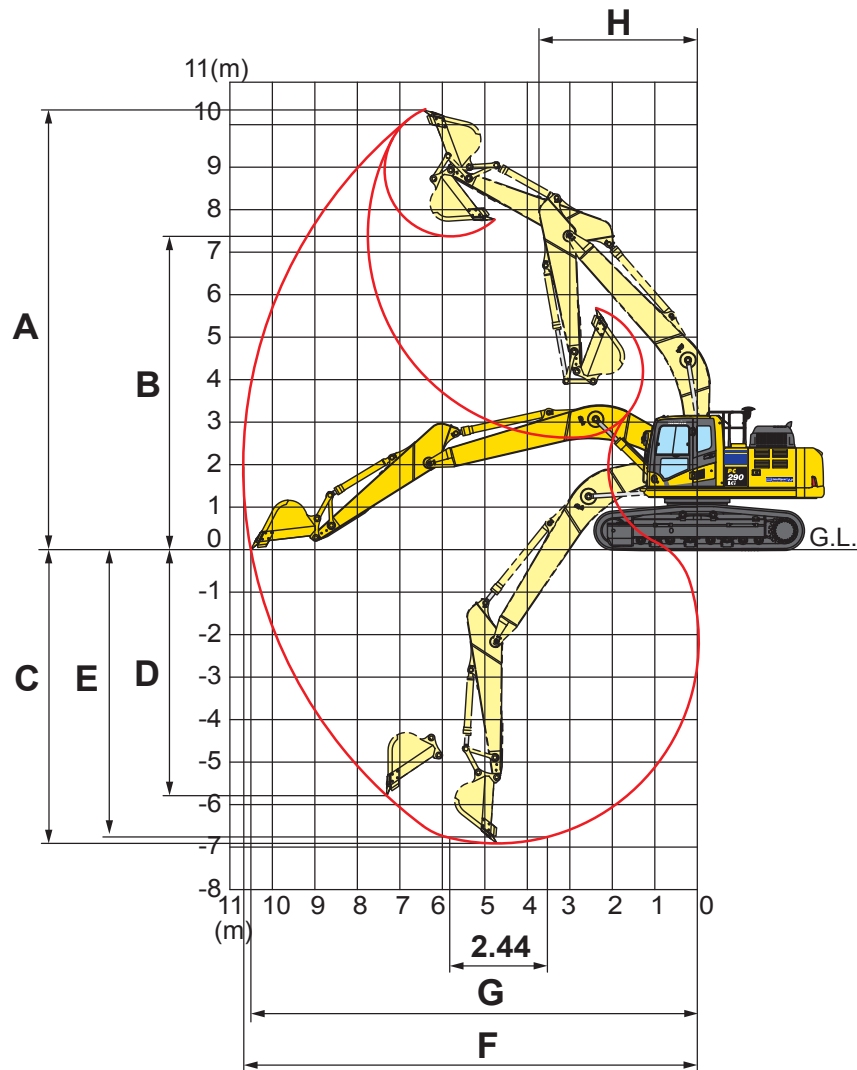
Exceeding recommended attachment weights may negatively impact performance and accuracy of semi-automatic function.

- - Used with material weights up to 3,500 lbs./yd³ - Quarry/rock/high abrasion applications
- - Used with material weights up to 2,500 lbs./yd³ - General construction
- - Used with material weights up to 3,000 lbs./yd³ - Tough digging applications

- - Used with material weights up to 2,000 lbs./yd³ - Light materials applications
- X - Not useable

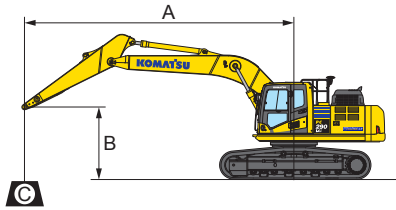
General specification

Working range



	Arm length	3,200 mm	10'6"	3,500 mm	11'6"
A	Max. digging height	10,300 mm	33'10"	10,335 mm	33'11"
B	Max. dumping height	7,375 mm	24'2"	7,440 mm	24'5"
C	Max. digging depth	6,820 mm	22'5"	7,120 mm	23'4"
D	Max. vertical wall digging depth	5,740 mm	18'10"	5,850 mm	19'2"
E	Max. digging depth for 8' level bottom	6,750 mm	22'2"	7,070 mm	23'2"
F	Max. digging reach	10,710 mm	35'2"	10,890 mm	35'8"
G	Max. digging reach at ground level	10,450 mm	34'3"	10,715 mm	35'2"
H	Min. swing radius	3,680 mm	12'1"	3,740 mm	12'3"
SAE rating	Bucket digging force at power max.	176 kN 17,900 kg / 39,463 lbs.		176 kN 17,900 kg / 39,463 lbs.	
	Arm crowd force at power max.	129 kN 13,100 kg / 28,881 lbs.		121 kN 12,400 kg / 27,337 lbs.	
ISO rating	Bucket digging force at power max.	198 kN 20,200 kg / 44,533 lbs.		198 kN 20,200 kg / 44,533 lbs.	
	Arm crowd force at power max.	133 kN 13,600 kg / 29,983 lbs.		125 kN 12,800 kg / 28,219 lbs.	

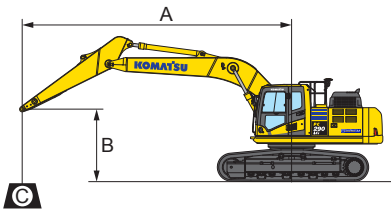
Lifting capacity with lifting mode



- A: Reach from swing center
- B: Bucket hook height
- C: Lifting capacity
- Cf: Rating over front
- Cs: Rating over side
- ⊗ Rating at maximum reach

- Conditions:**
- Boom length: 6,150 mm 20' 2"
 - Bucket: None
 - Lifting mode: On

Arm: 3,200 mm 10'6"		Bucket: None						Shoes: 800 mm 31.5" triple grouser				Unit: kg lbs.		
B	A	3.0 m 10'		4.6 m 15'		6.1 m 20'		7.6 m 25'		9.1 m 30'		MAX ⊗		
		Cf	Cs	Cf	Cs	Cf	Cs	Cf	Cs	Cf	Cs	⊗	Cf	Cs
7.6 m 25'												7.1 m 23'	* 4,700	* 4,700
6.1 m 20'						* 7,350	* 7,350	* 6,350	5,950			8.1 m 26'	* 4,500	* 4,500
4.6 m 15'				* 9,700	* 9,700	* 8,250	8,150	* 7,550	5,850			8.7 m 29'	* 4,500	* 4,500
3.0 m 10'				* 12,350	11,800	* 9,550	7,800	* 8,200	5,650			9.0 m 30'	* 4,650	4,450
1.5 m 5'				* 27,300	26,000	* 21,100	17,200	* 18,000	12,500			30'	* 10,300	9,800
0 m 0'	* 7,300	* 7,300	* 15,850	10,700	* 11,600	7,200	8,500	5,350				9.1 m 29'	* 5,000	4,300
-1.5 m -5'	* 16,200	* 16,200	* 34,900	23,600	* 25,600	15,900	18,700	11,800				30'	* 11,000	9,500
-3.0 m -10'	* 12,550	* 12,550	* 15,850	10,550	11,600	7,100	8,400	5,300				8.9 m 29'	* 5,500	4,400
-4.6 m -15'	* 27,700	* 27,700	* 35,000	23,300	25,600	15,600	18,600	11,700				28'	* 6,450	4,700
	* 19,250	* 19,250	* 14,900	10,650	* 11,300	7,100						7.6 m 25'	* 8,200	5,400
	* 42,500	* 42,500	* 32,900	23,400	* 24,900	15,700						25'	* 18,100	11,900
	* 17,100	* 17,100	* 12,600	10,850	* 9,250	7,300						6.3 m 21'	* 8,800	7,000
	* 37,800	* 37,800	* 27,800	23,900	* 20,400	16,100						21'	* 19,400	15,400



- A: Reach from swing center
- B: Bucket hook height
- C: Lifting capacity
- Cf: Rating over front
- Cs: Rating over side
- ⊗ Rating at maximum reach

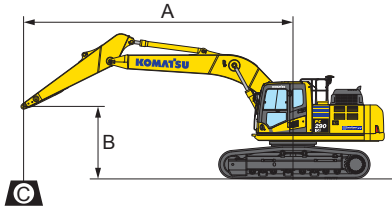
- Conditions:**
- Boom length: 6,150 mm 20' 2"
 - Bucket: None
 - Lifting mode: On

Arm: 3,500 mm 11'6"		Bucket: None						Shoes: 800 mm 31.5" triple grouser				Unit: kg lbs.				
B	A	1.5 m 5'		3.0 m 10'		4.6 m 15'		6.1 m 20'		7.6 m 25'		9.1 m 30'		MAX ⊗		
		Cf	Cs	Cf	Cs	Cf	Cs	Cf	Cs	Cf	Cs	Cf	Cs	⊗	Cf	Cs
7.6 m 25'														7.4 m 24'	* 4,300	* 4,300
6.1 m 20'										* 6,300	60,00			8.3 m 27'	* 4,150	* 4,150
4.6 m 15'										* 13,900	13,200			27'	* 9,200	* 9,200
3.0 m 10'										* 7,900	* 7,900	* 7,250	5,850	8.9 m 29'	* 4,150	* 4,150
1.5 m 5'										* 17,400	* 17,400	* 16,000	12,900	29'	* 9,200	* 9,200
0 m 0'										* 11,750	* 11,750	* 9,200	7,800	9.3 m 30'	* 4,300	4,250
-1.5 m -5'										* 25,900	* 25,900	* 20,300	17,200	30'	* 9,500	9,400
-3.0 m -10'										* 14,200	11,100	* 10,500	7,450	9.3 m 31'	* 4,550	4,150
-4.6 m -15'										* 31,300	24,500	* 23,100	16,400	31'	* 10,100	9,100
										* 15,600	10,650	* 11,400	71,50	9.1 m 30'	* 5,050	4,200
										* 18,100	* 18,100	* 34,300	23,500	30'	* 11,100	9,300
	* 8,150	* 8,150	* 12,500	* 12,500	* 15,850	10,450	11,550	7,000	8,350	5,250				8.7 m 28'	* 5,850	4,450
	* 18,000	* 18,000	* 27,500	* 27,500	* 34,900	23,100	25,500	15,500	18,500	11,600				28'	* 12,900	9,900
	* 12,800	* 12,800	* 18,250	* 18,250	* 15,100	10,500	* 11,400	7,000	8,400	5,250				7.9 m 26'	* 7,350	5,050
	* 28,200	* 28,200	* 40,300	* 40,300	* 33,300	23,200	* 25,100	15,500	18,500	11,600				26'	* 16,300	11,200
														6.6 m 22'	* 8,650	6,400
														22'	* 19,100	14,200

*Asterisk indicates load is limited by hydraulic capacity rather than tipping. Ratings are based on ISO standard No. 10567. Rated load capacity does not exceed 87% of hydraulic lift capacity or 75% of tipping load. Total weight of bucket and/or installed attachments must be deducted from the capacities shown above. Lift capacity chart is based on machine located on a solid, level and uniform surface. Load ratings are at the arm bucket pin location, use of any attachment point in a different location to handle objects could affect excavator lift performance.

General specification

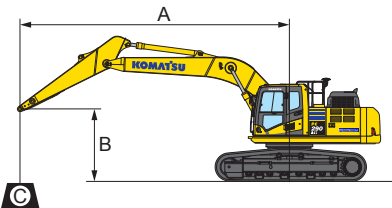
Lifting capacity with lifting mode



- A: Reach from swing center
- B: Bucket hook height
- C: Lifting capacity
- Cf: Rating over front
- Cs: Rating over side
- ☉ Rating at maximum reach

- Conditions:
- Boom length: 6,150 mm 20' 2"
 - Bucket: None
 - Lifting mode: On

Arm: 3,200 mm 10'6"		Bucket: None				Shoes: 700 mm 28" triple grouser				Unit: kg lbs.				
B	A	3.0 m 10'		4.6 m 15'		6.1 m 20'		7.6 m 25'		9.1 m 30'		MAX ☉		
		Cf	Cs	Cf	Cs	Cf	Cs	Cf	Cs	Cf	Cs	☉	Cf	Cs
7.6 m 25'												7.1 m 23'	* 4,700	* 4,700
													* 10,400	* 10,400
6.1 m 20'						* 7,350	* 7,350	* 6,350	5,900			8.1 m 26'	* 45,000	* 4,500
						* 16,200	* 16,200	* 14,000	13,000				* 10,000	* 10,000
4.6 m 15'				* 9,700	* 9,700	* 8,250	8,050	* 7,550	5,800			8.7 m 29'	* 4,500	* 4,500
				* 21,300	* 21,300	* 18,200	17,800	* 16,700	12,700				* 10,000	* 10,000
3.0 m 10'				* 12,350	11,650	* 9,550	7,700	* 8,200	5,600			9.0 m 30'	* 4,650	4,400
				* 27,300	25,700	* 21,100	17,000	* 18,000	12,400				* 10,300	9,700
1.5 m 5'				* 14,700	10,950	* 10,800	7,350	8,550	5,450			9.1 m 30'	* 5,000	4,250
				* 32,400	24,100	* 23,800	16,200	18,800	12,000				* 11,000	9,400
0 m 0'	* 7,300	* 7,300	* 15,850	10,550	11,600	7,100	8,400	5,300				8.9 m 29'	* 5,500	4,350
	* 16,200	* 16,200	* 34,900	23,300	25,600	15,700	18,500	11,700					* 12,200	9,600
-1.5 m -5'	* 12,550	* 12,550	* 15,850	10,450	11,500	7,000	8,300	5,250				8.4 m 28'	* 6,450	4,650
	* 27,700	* 27,700	* 35,000	23,000	25,300	15,400	18,300	11,500					* 14,200	10,200
-3.0 m -10'	* 19,250	* 19,250	* 14,900	10,500	* 11,300	7,000						7.6 m 25'	* 8,200	5,300
	* 42,500	* 42,500	* 32,900	23,200	* 24,900	15,500							* 18,100	11,700
-4.6 m -15'	* 17,100	* 17,100	* 12,600	10,750	* 9,250	7,200						6.3 m 21'	* 8,800	6,900
	* 37,800	* 37,800	* 27,800	23,700	* 20,400	15,900							* 19,400	15,300



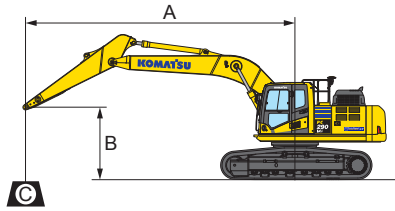
- A: Reach from swing center
- B: Bucket hook height
- C: Lifting capacity
- Cf: Rating over front
- Cs: Rating over side
- ☉ Rating at maximum reach

- Conditions:
- Boom length: 6,150 mm 20' 2"
 - Bucket: None
 - Lifting mode: On

Arm: 3,500 mm 11'6"		Bucket: None				Shoes: 700 mm 28" triple grouser				Unit: kg lbs.						
B	A	1.5 m 5'		3.0 m 10'		4.6 m 15'		6.1 m 20'		7.6 m 25'		9.1 m 30'		MAX ☉		
		Cf	Cs	Cf	Cs	Cf	Cs	Cf	Cs	Cf	Cs	Cf	Cs	☉	Cf	Cs
7.6 m 25'														7.4 m 24'	* 4,300	* 4,300
															* 9,500	* 9,500
6.1 m 20'										* 6,300	5,950			8.3 m 27'	* 4,150	* 4,150
										* 13,900	13,100				* 9,200	* 9,200
4.6 m 15'								* 7,900	* 7,900	* 7,250	5,800			8.9 m 29'	* 4,150	* 4,150
								* 17,400	* 17,400	* 16,000	12,800				* 9,200	* 9,200
3.0 m 10'						* 11,750	11,750	* 9,200	7,750	* 7,950	5,600	* 5,000	4,300	9.3 m 30'	* 4,300	4,200
						* 25,900	25,900	* 20,300	17,000	* 17,500	12,400	* 11,000	9,500		* 9,500	9,300
1.5 m 5'						* 14,200	10,950	* 10,500	7,350	8,550	5,400	* 5,750	4,200	9.3 m 31'	* 4,550	4,100
						* 31,300	24,200	* 23,100	16,200	18,800	12,000	* 12,700	9,300		* 10,100	9,000
0 m 0'				* 8,200	* 8,200	* 15,600	10,500	* 11,400	7,100	8,350	5,250			9.1 m 30'	* 5,050	4,150
				* 18,100	* 18,100	* 34,300	23,200	* 25,200	15,600	18,400	11,600				* 11,100	9,200
-1.5 m -5'	* 8,150	* 8,150	* 12,500	* 12,500	* 15,850	10,350	11,400	6,950	8,250	5,200				8.7 m 28'	* 5,850	4,400
	* 18,000	* 18,000	* 27,500	* 27,500	* 34,900	22,800	25,200	15,300	18,200	11,400					* 12,900	9,700
-3.0 m -10'	* 12,800	* 12,800	* 18,250	* 18,250	* 15,100	10,400	* 11,400	6,950	8,300	5,200				7.9 m 26'	* 7,350	5,000
	* 28,200	* 28,200	* 40,300	* 40,300	* 33,300	22,900	* 25,100	15,300	18,300	11,500					* 16,300	11,000
-4.6 m -15'			* 18,100	* 18,100	* 13,150	10,550	* 9,800	7,050						6.6 m 22'	* 8,650	6,350
			* 39,900	* 39,900	* 29,000	23,300	* 21,600	15,600							* 19,100	14,000

*Asterisk indicates load is limited by hydraulic capacity rather than tipping. Ratings are based on ISO standard No. 10567. Rated load capacity does not exceed 87% of hydraulic lift capacity or 75% of tipping load. Total weight of bucket and/or installed attachments must be deducted from the capacities shown above. Lift capacity chart is based on machine located on a solid, level and uniform surface. Load ratings are at the arm bucket pin location, use of any attachment point in a different location to handle objects could affect excavator lift performance.

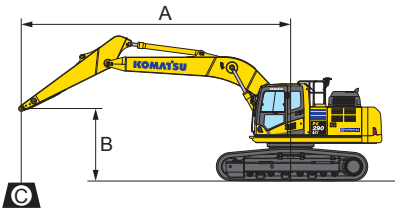
Lifting capacity with lifting mode



- A: Reach from swing center
- B: Bucket hook height
- C: Lifting capacity
- Cf: Rating over front
- Cs: Rating over side
- ⊗ Rating at maximum reach

- Conditions:
- Boom length: 6,150 mm 20' 2"
 - Bucket: None
 - Lifting mode: On

Arm: 3,200 mm 10'6"		Bucket: None						Shoes: 850 mm 33.5" triple grouser				Unit: kg lbs.		
B	A	3.0 m 10'		4.6 m 15'		6.1 m 20'		7.6 m 25'		9.1 m 30'		MAX ⊗		
		Cf	Cs	Cf	Cs	Cf	Cs	Cf	Cs	Cf	Cs	⊗	Cf	Cs
7.6 m 25'												7.1 m 23'	* 4,700	* 4,700
6.1 m 20'						* 7,350	* 7,350	* 6,350	5,950			8.1 m 26'	* 4,500	* 4,500
4.6 m 15'				* 9,700	* 9,700	* 8,250	8,200	* 7,550	5,850			8.7 m 29'	* 4,500	* 4,500
3.0 m 10'				* 12,350	11,850	* 95,50	7,850	* 8,200	5,700			9.0 m 30'	* 4,650	4,450
1.5 m 5'				* 27,300	26,100	* 21,100	17,300	* 18,000	12,600				* 10,300	9,800
0 m 0'	* 7,300	* 7,300	* 15,850	10,750	* 11,600	7,250	8,550	5,400				9.1 m 30'	* 5,000	4,350
-1.5 m -5'	* 16,200	* 16,200	* 34,900	23,700	* 25,600	16,000	18,800	11,900				8.9 m 29'	* 11,000	9,600
-3.0 m -10'	* 12,550	* 12,550	* 15,850	10,650	11,700	7,150	8,450	5,350				8.4 m 28'	* 5,500	4,400
-4.6 m -15'	* 27,700	* 27,700	* 35,000	23,400	25,800	15,700	18,700	11,700				8.4 m 28'	* 6,450	4,700
	* 19,250	* 19,250	* 14,900	10,700	* 11,300	7,150						7.6 m 25'	* 14,200	10,400
	* 42,500	* 42,500	* 32,900	23,600	* 24,900	15,700						7.6 m 25'	* 8,200	5,400
	* 17,100	* 17,100	* 12,600	10,900	* 9,250	7,300						6.3 m 21'	* 18,100	12,000
	* 37,800	* 37,800	* 27,800	24,100	* 20,400	16,200						6.3 m 21'	* 8,800	7,050
													* 19,400	15,500



- A: Reach from swing center
- B: Bucket hook height
- C: Lifting capacity
- Cf: Rating over front
- Cs: Rating over side
- ⊗ Rating at maximum reach

- Conditions:
- Boom length: 6,150 mm 20' 2"
 - Bucket: None
 - Lifting mode: On

Arm: 3,500 mm 11'6"		Bucket: None						Shoes: 850 mm 33.5" triple grouser				Unit: kg lbs.									
B	A	1.5 m 5'		3.0 m 10'		4.6 m 15'		6.1 m 20'		7.6 m 25'		9.1 m 30'		MAX ⊗							
		Cf	Cs	Cf	Cs	Cf	Cs	Cf	Cs	Cf	Cs	Cf	Cs	⊗	Cf	Cs					
7.6 m 25'														7.4 m 24'	* 4,300	* 4,300					
6.1 m 20'										* 6,300	6,000			8.3 m 27'	* 9,500	* 9,500					
4.6 m 15'										* 7,900	* 7,900	* 7,250	5,900	8.9 m 29'	* 4,150	4,150					
3.0 m 10'										* 17,400	* 17,400	* 16,000	13,000	9.3 m 30'	* 9,200	9,200					
1.5 m 5'										* 11,750	11,750	* 9,200	7,850	* 5,000	4,350	9.3 m 30'	* 4,300	4,300			
0 m 0'										* 25,900	25,900	* 20,300	17,300	* 17,500	12,600	* 11,000	9,600	30'	* 9,500	9,500	
-1.5 m -5'										* 14,200	11,150	* 10,500	7,500	8,650	5,500	* 5,750	4,300	9.3 m 31'	* 4,550	4,150	
-3.0 m -10'										* 31,300	24,600	* 23,100	16,500	19,000	12,200	* 12,700	9,400	31'	* 10,100	9,200	
-4.6 m -15'										* 8,200	* 8,200	* 15,600	10,700	* 11,400	7,200	8,500	5,350	9.1 m 30'	* 5,050	4,250	
										* 18,100	* 18,100	* 34,300	23,600	* 25,200	15,900	18,800	11,800	30'	* 11,100	9,300	
	* 8,150	* 8,150	* 12,500	* 12,500	* 15,850	10,550	11,650	7,050	8,400	5,300				8.7 m 28'	* 5,850	4,500					
	* 18,000	* 18,000	* 27,500	* 27,500	* 34,900	23,200	25,700	15,600	18,600	11,600				8.7 m 28'	* 12,900	9,900					
	* 12,800	* 12,800	* 18,250	* 18,250	* 15,100	10,550	* 11,400	7,050	8,450	5,300				7.9 m 26'	* 7,350	5,100					
	* 28,200	* 28,200	* 40,300	* 40,300	* 33,300	23,300	* 25,100	15,600	18,600	11,700				26'	* 16,300	11,200					
	* 18,100	* 18,100	* 13,150	10,750	* 9,800	7,200								6.6 m 22'	* 8,650	6,450					
										* 39,900	* 39,900	* 29,000	23,700	* 21,600	15,900						

*Asterisk indicates load is limited by hydraulic capacity rather than tipping. Ratings are based on ISO standard No. 10567. Rated load capacity does not exceed 87% of hydraulic lift capacity or 75% of tipping load. Total weight of bucket and/or installed attachments must be deducted from the capacities shown above. Lift capacity chart is based on machine located on a solid, level and uniform surface. Load ratings are at the arm bucket pin location, use of any attachment point in a different location to handle objects could affect excavator lift performance.

Equipment

Cab	PC290LC	PC290LCi
ROPS cab (ISO12117-2)	●	●
High back air suspension seat, with heat	●	●
Operator Protective Guard (OPG) Level 1 top guard	●	●
Large LCD high resolution color monitor	●	●
Automatic climate control	●	●
Retractable seat belt (76mm width) with indicator	●	●
Two 12 V accessory outlets	●	●
Rearview mirrors, right hand and left hand side	●	●
Rearview monitoring system (1 camera)	●	●
Travel alarm	●	●
Proportional joystick control levers	○	●
Operator identification system	●	●
Hydraulic lock lever	●	●
Skylight	●	●
Sunvisor	○	○
Rainvisor	○	○
Working lights, two additional cab mounted	○	○
Straight travel pedal	□	□

Engine	PC290LC	PC290LCi
Komatsu SAA6D107E-3 Tier 4 Final	●	●
Dry type air cleaner, double element	●	●
Fuel pre-filter with water separator	●	●
Fuel high efficiency filter	●	●
Automatic engine warm up system	●	●
Programmable auto-idle shut down	●	●
Overheat prevention system	●	●
Turbocharger protection system	●	●

Hydraulic controls	PC290LC	PC290LCi
Pattern change control valve (ISO to BH control)	●	●
Working mode selection system (6 modes)	●	●
Dual pump, closed center load sensing system (CLSS)	●	●
Auto-deceleration system	●	●
Power max system	●	●
Boom and arm holding valves	●	●
Arm quick return valve	●	●
One-way/two-way flow hydraulic control unit Variable flow, return filter, and accumulator	○	-
One-way/two-way flow hydraulic control unit Variable pressure and flow, return filter, and accumulator	-	○

Technology	PC290LC	PC290LCi
Komtrax level 5.0	●	●
intelligent Machine Control	-	●
264 mm (10.4") IMC color monitor with USB	-	●
Multi-band UHF/915SS radio	-	●
Auto grade assist	-	●
Auto stop control	-	●
Minimum distance control	-	●
Bucket angle hold control	-	●
Provision for auto tilt control*	-	●
Komvision (4 camera system)	-	○□
IMU for auto-tilt control	-	□
In field design — 2D simple surface	-	●

Electrical system	PC290LC	PC290LCi
Batteries, large capacity (2 x 12 V)	●	●
Battery master disconnect switch with lockout tagout	●	●
Alternator (90 A, 24 V)	●	●
Starter motor (5.5 kW)	●	●
Secondary engine shut-off switch	●	●
Working lights (1 front RH side/1 boom LH side)	●	●

Booms and arms	PC290LC	PC290LCi
6,150 mm (20'2") boom assembly	●	●
6,150 mm (20'2") boom assembly with +1 attach piping	○	○
3,200 mm (10'6") arm assembly	●	●
3,200 mm (10'6") arm assembly with +1 attach piping	○	○
3,500 mm (11'6") arm assembly	○	○
3,500 mm (11'6") arm assembly with +1 attach piping	○	○
Boom foot, boom nose, and arm end steel castings	●	●

Undercarriage and work equipment	PC290LC	PC290LCi
800 mm (31.5") triple grouser track shoes	●	●
850 mm (33.5") triple grouser track shoes	○	○
700 mm (28") triple grouser track shoes	○	○
8 track/2 carrier rollers (each side)	●	●
Hydraulic track adjusters (each side)	●	●
Track guiding guards, center section (each side)	●	●
Track roller guards, full length (each side)	○	○
Counterweight, 5,200 kg (11,464 lb)	●	●
Counterweight, 5,500 kg (12,125 lb)**	○	-
Object handling H-link	●	●
Tie off points (ISO 14567) — work equipment and upper structure	●	●

Guards and covers	PC290LC	PC290LCi
Revolving frame deck guards	●	●
Revolving frame undercovers — standard	●	●
Track frame swivel guard	●	●
Pump/engine room partition	●	●
Turbocharger exhaust manifold cover	●	●
Dust net for radiator and hydraulic oil cooler	●	●
Slip-resistant foot plates	●	●
Tool-free access to engine and aftertreatment	●	●
Left and right side hand rails	●	●
Cab full front guard, OPG Level 1	○	○
Cab full front guard, OPG Level 2	○	○
Cab top guard, OPG Level 2	○	○
Revolving frame undercovers — heavy duty	○	○

Drive and brake system	PC290LC	PC290LCi
Three speed travel with auto shift	●	●
Double reduction type final drive	●	●
Triple labyrinth final drive seals	●	●

*IMU for auto-tilt control and one-way/two-way flow hydraulic control unit required for operation

**With revolving frame reinforcements, only available with super long fronts

For a complete list of available attachments, please contact your local Komatsu distributor.

Standard equipment	●
Optional equipment	○
Optional (field install)	□
Not applicable	-

Product designs, specifications and/or data in this document are provided for informational purposes only and are not warranties of any kind. Product designs and/or specifications may be changed at any time without notice. The only warranties that apply to sales of products and services are Komatsu's standard written warranties, which will be furnished upon request.

Komatsu and other trademarks and service marks used herein are the property of Komatsu Ltd., Komatsu America Corp., Komatsu Mining Corp., or one of their affiliates, or the respective owners or licensees.

KOMATSU

komatsu.com

